

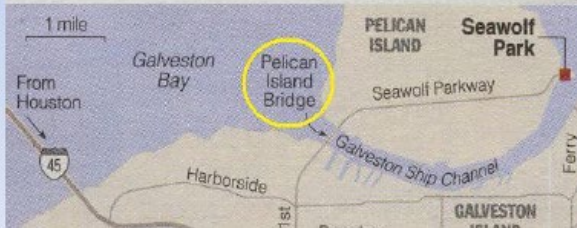


Pelican Island Causeway Update

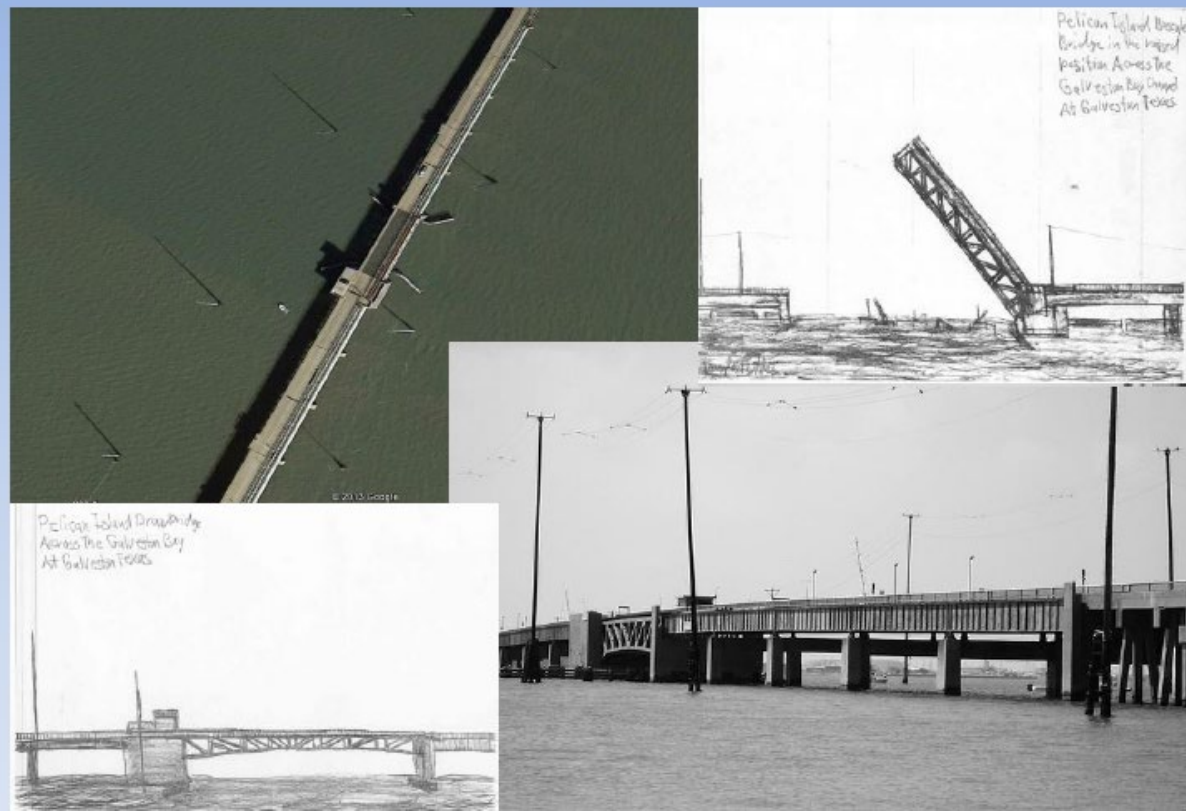
Galveston Bay Council

January 20, 2021

The Pelican Island Bridge in Galveston Harbor



Lone Star
Harbor
Safety
Committee



View looking west.



View from bridge looking north.



Seawolf Parkway

Bridge Condition and Maintenance History

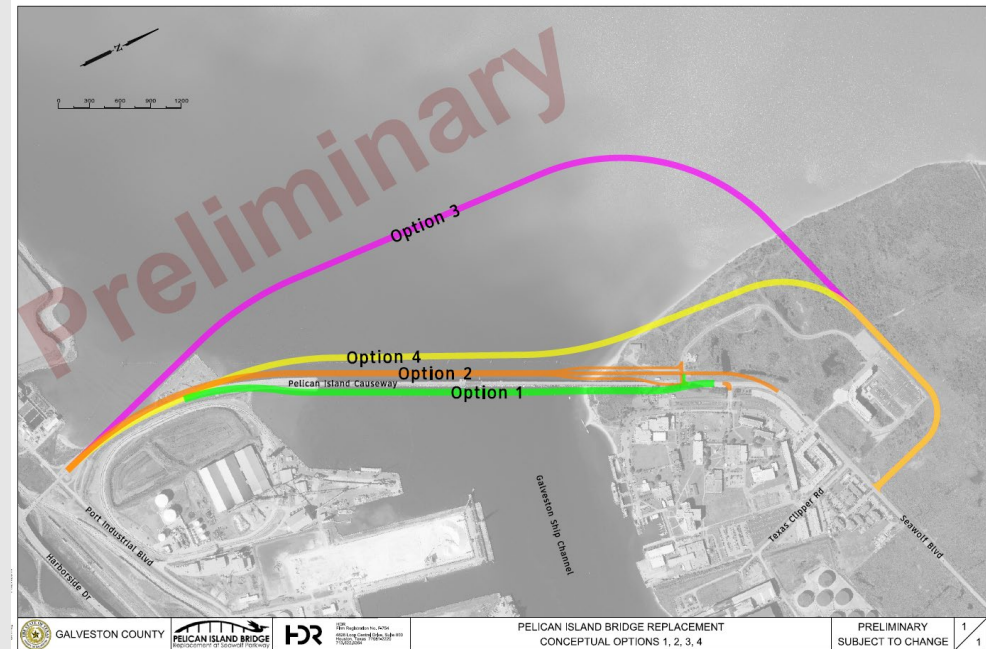


Paul Rollins, P.E. – TxDOT Bridge Division

Early project development



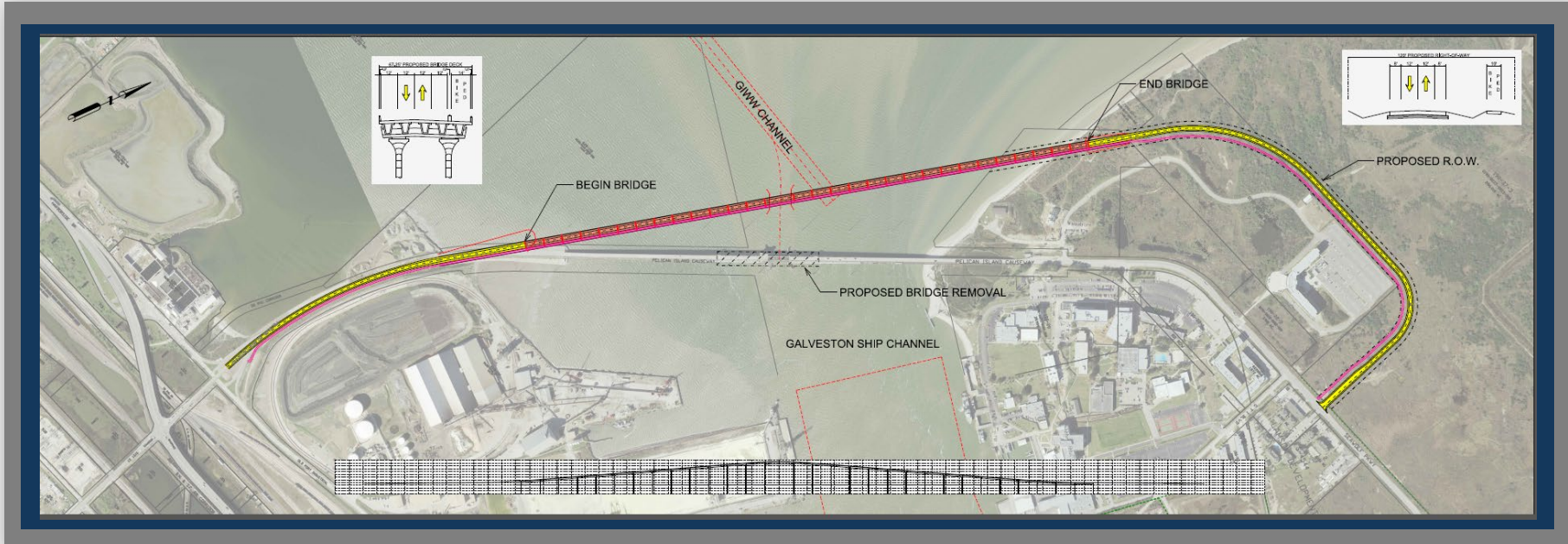
- Replacement bridge concepts have been discussed for several years
- TxDOT off-system bridge program
 - Identified \$50 million in construction funding
 - Needs a local sponsor
- Galveston County led the development of preliminary alternatives (2017-2019)
 - Public workshop meetings held
 - “Option 4” was chosen
 - Project was selected for additional funding from the MPO



TxDOT preliminary design



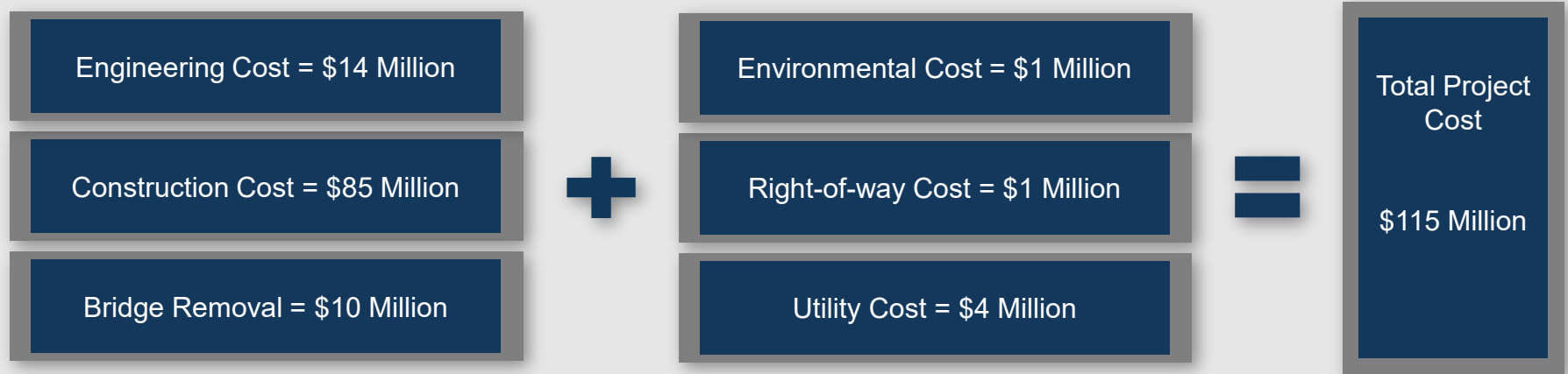
- TxDOT has taken the lead to advance the project
- Alternative refined based on input from stakeholders including TAMU-Galveston
 - Wrap around the dormitory
 - Avoid future turtle research facility



Updated estimates



- TxDOT has prepared updated cost estimates





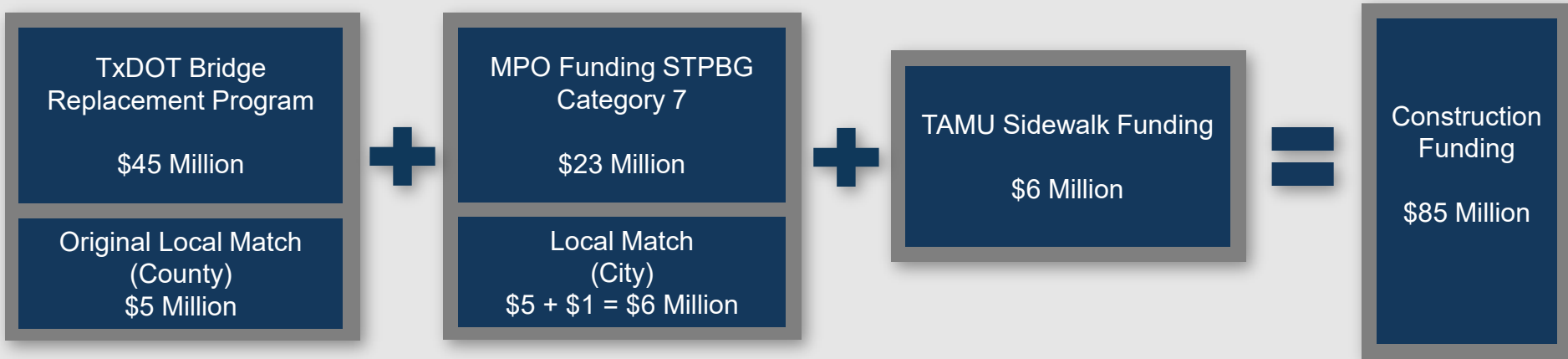
- Engineering design and construction management costs: \$14 Million



Construction cost estimate and funding



- TxDOT updated construction cost estimate: \$85 Million
- TxDOT/County has asked the MPO to move the project to FY 2024



Additional costs



- Environmental:
 - Started by County, will require update
 - Coast Guard and Corps permit require detailed design information
 - \$1 Million
- Utility adjustments
 - TxDOT coordinated with Centerpoint on powerline adjustments
 - \$4 Million
- Right-of-way:
 - TAMU-G and POHA property “donation”
 - Lamson Nguyen property
 - \$1 Million
- Bridge removal costs

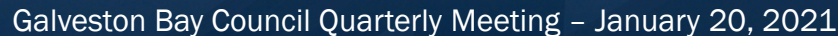
Project cost table



CURRENT COST ESTIMATES	
Construction Cost	\$85.0 M
Engineering	\$14.0 M
Bridge Removal	\$10.0 M
Environmental	\$1.0 M
Utility Adjustment	\$4.0 M
ROW	\$1.0 M
TOTAL	\$115.0 M

- Concerned about utility relocation costs, bridge removal costs, construction change orders, other overruns

-
- A photograph of the Kashiwa Bay Bridge, a long bridge with a central arch section, spanning a body of water. Several tall utility poles with power lines are visible along the bridge structure.



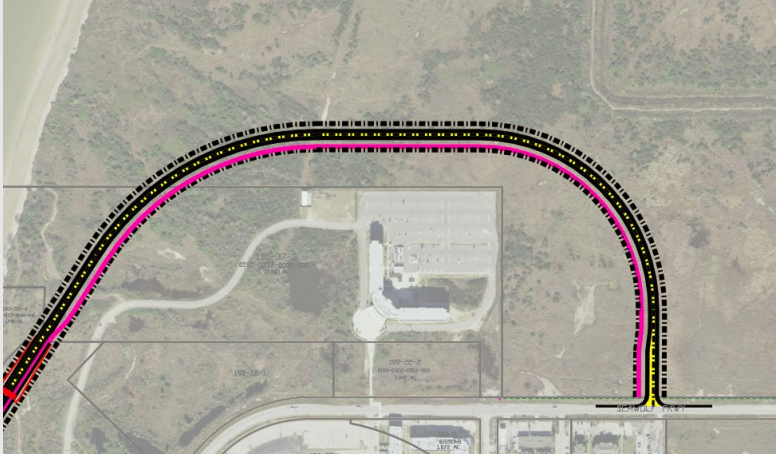
TOTAL PROJECT FUNDING COMMITMENT

Galveston County	\$7.0 M
City of Galveston	\$5.0 + \$1.0 M*
TAMU	\$6.0 M
POHA	\$2.0 M
Nav. District	\$10.0 M
MPO	\$23.0 M
TxDOT	\$59.0 M
TOTAL	\$113.0 M
SHORTFALL	\$2.0 M

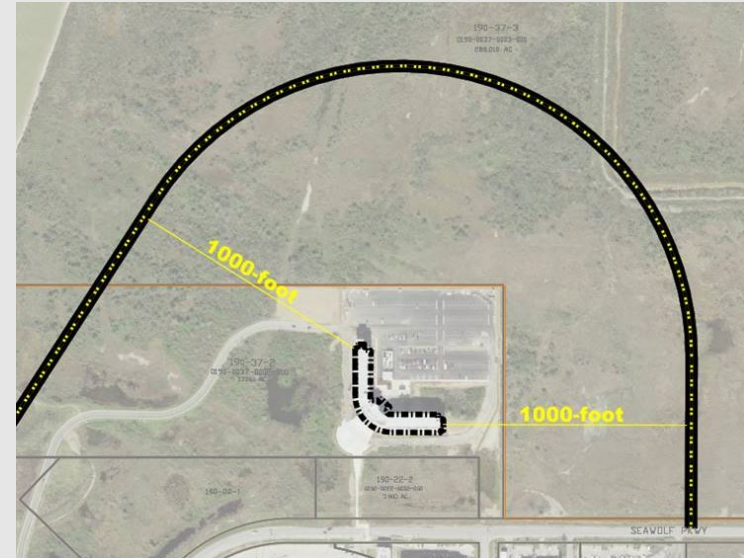
**\$1 M from TAMU to City of Galveston for transfer of existing Seawolf Parkway through campus.*

\$33 Million total local government participation
(-\$1.5 Million Birch Road Match)

- 300-foot alignment +\$800,000



- 1000-foot alignment +\$1,200,000



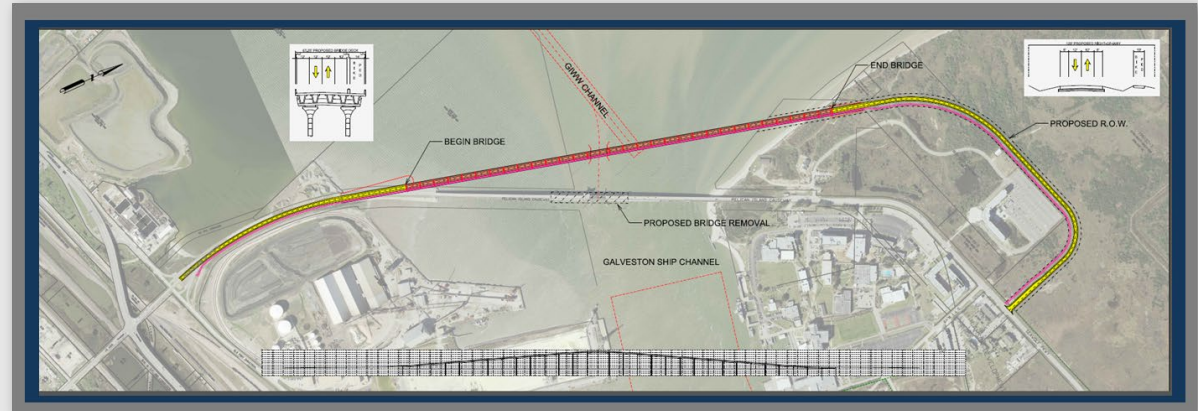
Initializing survey work

Assigned in-house designer

Received additional bridge removal estimates

Continued work on Advance Funding Agreement

Continued coordination



Project schedule



FY 2024 Letting				2020				2021				2022				2023				2024				2025				2026			
	Task	Responsible Party	Duration	Q1	Q2	Q3	Q4	Q1	Q2	Q3	Q4	Q1	Q2	Q3	Q4	Q1	Q2	Q3	Q4	Q1	Q2	Q3	Q4	Q1	Q2	Q3	Q4	Q1	Q2	Q3	Q4
	Execute Agreements	All Parties	Action																												
	Preliminary Engineering	TxDOT & County	18 months																												
	Environmental Studies	County	18 months																												
	Right-of-way Acquisition	City and County	18 months																												
	Final Design	TxDOT	24 months																												
	Environmental Permitting	County	24 months																												
	Utility Adjustments	TxDOT, City and County	24 months																												
	Plan Review	TxDOT	6 months																												
	Letting	TxDOT	Action																												
	Construction	TxDOT	36 months																												



Mitigation opportunity ideas and questions

Contact: Sue Theiss
Sue.theiss@txdot.gov
713.802.5070