



A Vision for Community

Candy Hattingh, Director of Incubate Galveston
Anna Weiss, Director of Green Galveston

March 4, 2024
GBEP PPE Meeting

Talk Overview:

- Brief introduction to Galveston and Vision Galveston
- Discussion of Vision Galveston Initiatives and Projects
 - Green Galveston and Incubate Galveston
- Takeaways and final thoughts

A little bit about Galveston

- Barrier island community of 50k people
- Deep rooted culture and history
- Issues facing Galveston:
 - Housing and development
 - Air and water pollution
 - Hurricanes, flooding and sea level rise
 - Loss of habitat and associated impacts (e.g. heat)

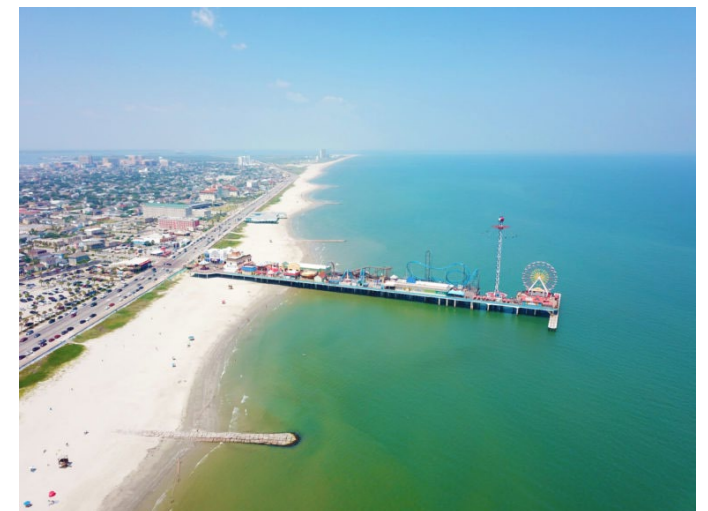
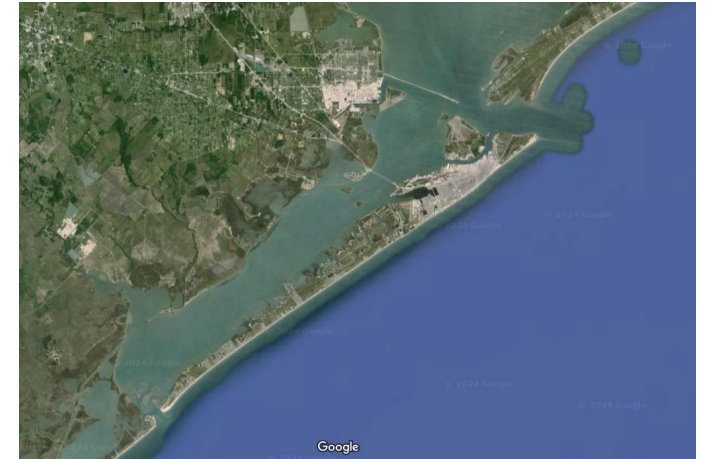
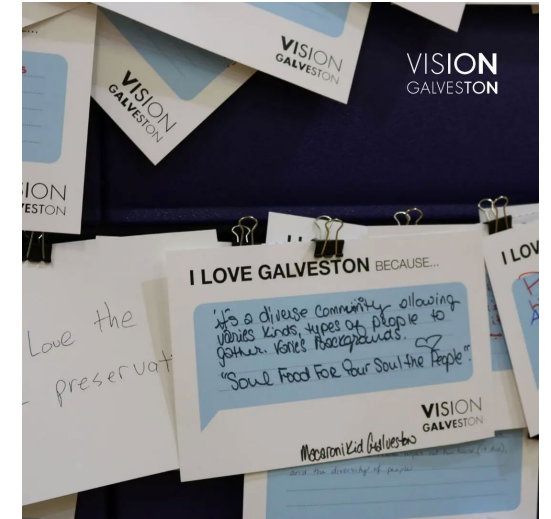
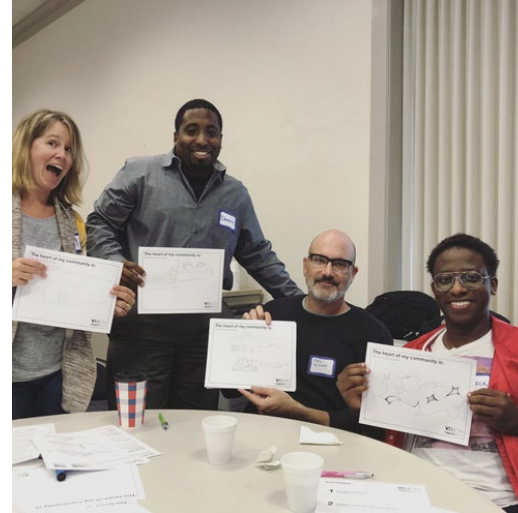


Photo: Galveston CVB

Vision Galveston Overview

- Community-driven visioning project
 - Inspired by efforts in places like Cincinnati and Detroit
- Making Galveston the best place to live, work, visit, and raise a family

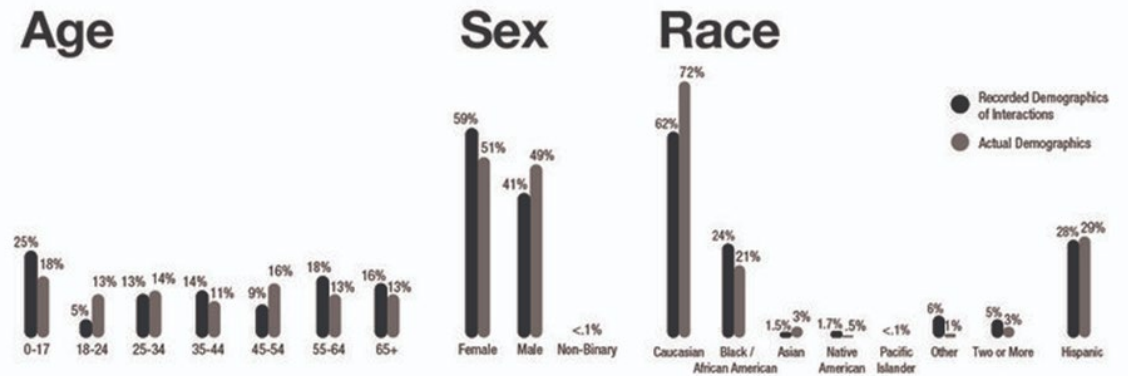
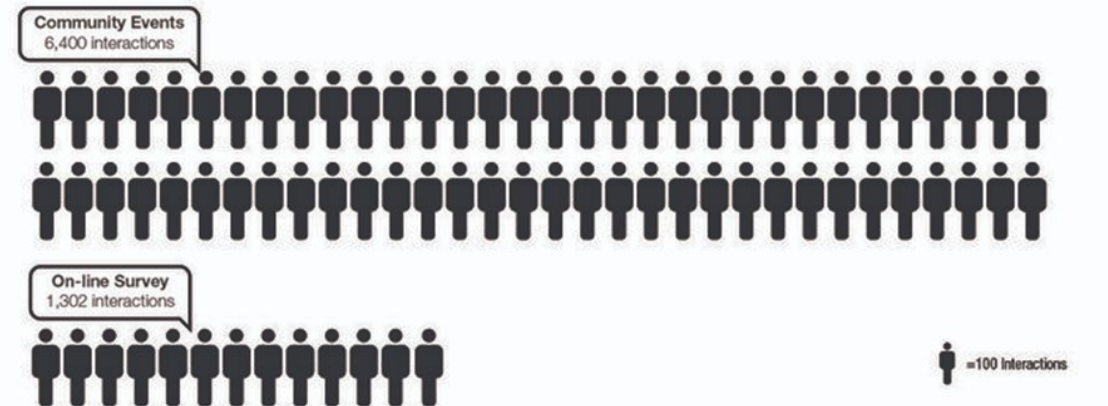


Photos: Vision Galveston

Vision Galveston Overview

- Community-driven visioning project
 - Inspired by efforts in places like Cincinnati and Detroit
- Making Galveston the best place to live, work, visit, and raise a family

We have reached our goal of 7,500 community members (15% of Galveston)



Vision Galveston Overview

- 78 Recommendations
- Currently have 5 Initiatives
 - Build Galveston
 - Measure Galveston
 - Engage Galveston
 - Incubate Galveston
 - Green Galveston
- Holistic view of community development

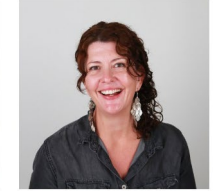
THE TEAM



Christine Bryant, CEO
Chief Executive Officer



Anna Weiss, Ph.D.
Green Galveston Executive Director



Candy Hattingh
Director of Incubate Galveston Initiatives



Tyler Robert
Build Galveston Executive Director



Daniel Torres
Engage Galveston Manager



Melissa Cline
Measure Galveston Data Specialist



Green Galveston Initiatives

GREEN RECOMMENDATIONS VISION GALVESTON

1. **Densify New Development in Already Developed Areas While Protecting Ecologically Sensitive Areas**
2. **Combine Dense Mixed-Use Development with Green Space in East End Flats**
3. **Integrate Nature in Development, both on the West End and in the Urban Core**
4. **Strengthen Partnerships Between Organizations Doing Conservation Work in Galveston**
5. **Convert Parts of Large Road Right-Of-Ways, Alleys, and Vacant Lots into a Green Urban Network**
6. **Create Multiple Connected Public Bayfront Access Points**
7. **Expand Opportunities to Kayak Along the Bay Side by Formalizing Paddling Trails**
8. **Create a Federally Designated Protected Area to Enhance Support for the Natural Ecosystems of Galveston Bay**
9. **Develop Robust Cross-Cultural, Cross-Generational Environmental Education Programs**
10. **Establish and Support a Coastal Innovation and Commercialization Center**
11. **Fund Multiple Interdisciplinary Research Groups Focusing on Various Aspects of Coastal Resilience**
12. **Set up a Coastal Protection Proposal Review Board that Evaluates Local Impact and Advocates for Benefits to the City and the Region**
13. **Reduce Flood Insurance Rates by Improving Galveston's Community Rating System Status**
14. **Create a Comprehensive Drainage and Green Infrastructure Plan**
15. **Join Regional and Global Networks Addressing Climate Change Responsiveness**
16. **Develop a Regional Nursery Plan for Post-Disaster Vegetation Recovery**
17. **Create Public Parks and Access Points Along the Port Waterfront**
18. **Improve Parks and Open Space**
19. **Ensure that there are Quality Parks Within Walking Distance of Every Home**
20. **Build an Amazing Destination Park that will Attract Residents and Visitors Alike**
21. **Develop a Sustainable Tourism Strategy for Galveston**
22. **Support Efforts to Promote Ecotourism in Galveston**
23. **Implement Green Infrastructure and Drainage Improvements North of Broadway**
24. **Advocate for the State of Texas to act as a Reinsurer for Windstorm Coverage**

VISION GALVESTON has 78 recommendations divided into strategic initiatives. Green Galveston is one initiative. For more information on The Plan, please visit www.visitgalveston.com

1. Right to Green: All Galvestonians have a right to the recreational, restorative, and social opportunities of high-quality parks and natural areas.

2. Green that Promotes Health: Galveston's parks and open space should support the physical and mental health of the island's residents.

3. Green that Supports the Local Ecology: Galveston's parks and open space should respond to and support the local ecological, and environmental conditions of the island.

4. Green that Supports the Local Economy: Galveston's parks and open space should support local economic growth and development across the island.

5. Green that is Connected: Galveston's parks and open space should be accessible for cyclists, pedestrians, residents utilizing public transportation, and through waterways.

6. Green that is Activated & Authentic: Galveston's parks and open space should include programming and placemaking that reflect the cultures and histories of the Island.

7. Green that is Educational & Promotes Stewardship: Galveston's parks and open space should provide immersive educational opportunities for residents that also support stewardship.

Planting Seeds for Change: Community Development of Nature-Based Solutions on a Gulf Coast Barrier Island

Funding Program: National Academies of Science Engineering and Math – Gulf Research Program

**NATIONAL
ACADEMIES** *Sciences
Engineering
Medicine*
GULF RESEARCH PROGRAM



HARC



ASAKURA
ROBINSON



Phase 1 – Planning Grant Project

6-month project ends
5/30/23

Primary goal - engage
community stakeholders to co-
develop a full Phase 2 Design
grant proposal





PLANTING SEEDS FOR CHANGE

Join us for BBQ, Music, Fun, and Engagement at a Public Workshop for **Nature-Based Solutions in Old Central Carver Park Neighborhood**

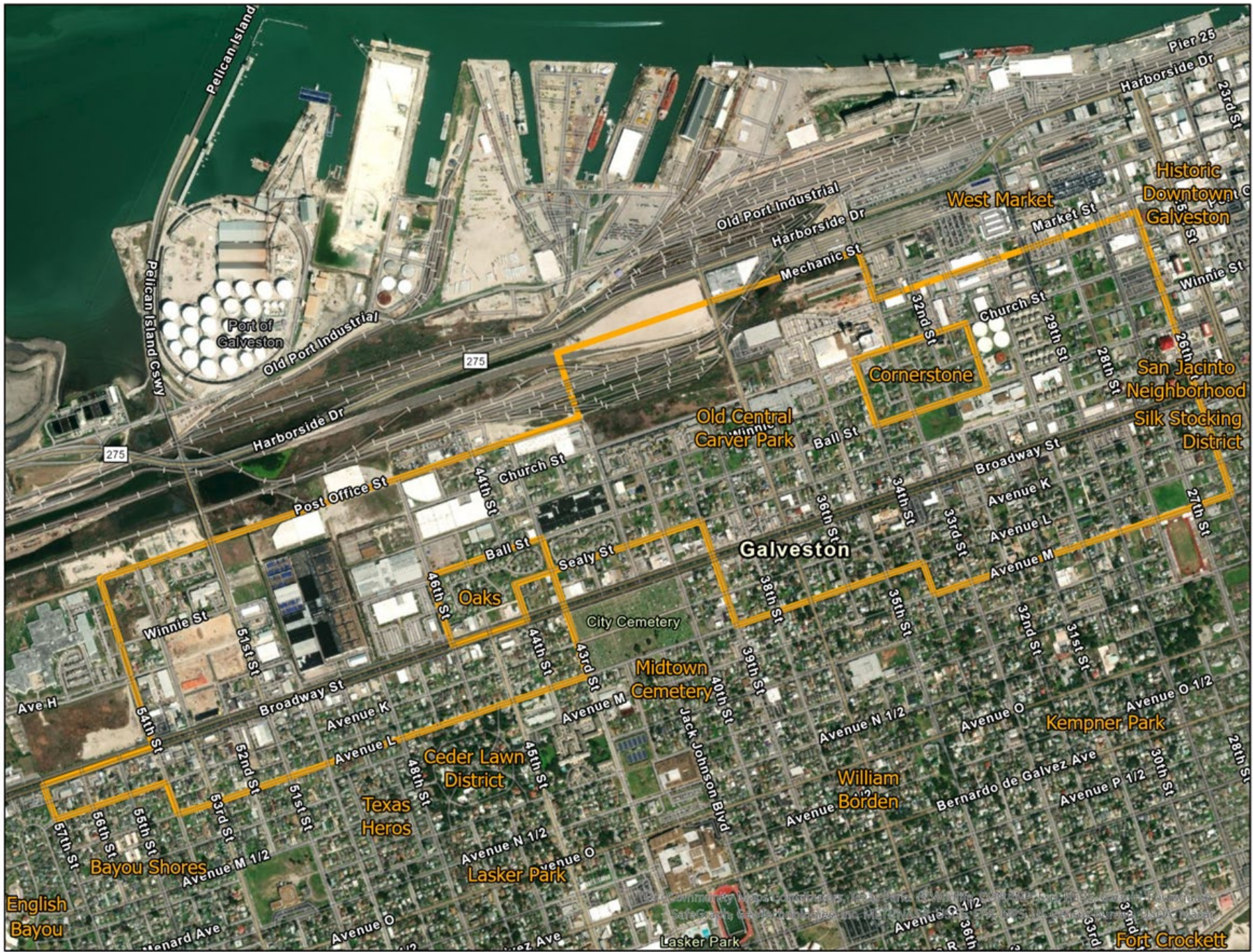
Come join your neighbors to hear about Planting Seeds for Change, a community driven effort to address climate-related hazards through nature-based improvements in the Old Central Carver Park Neighborhood.

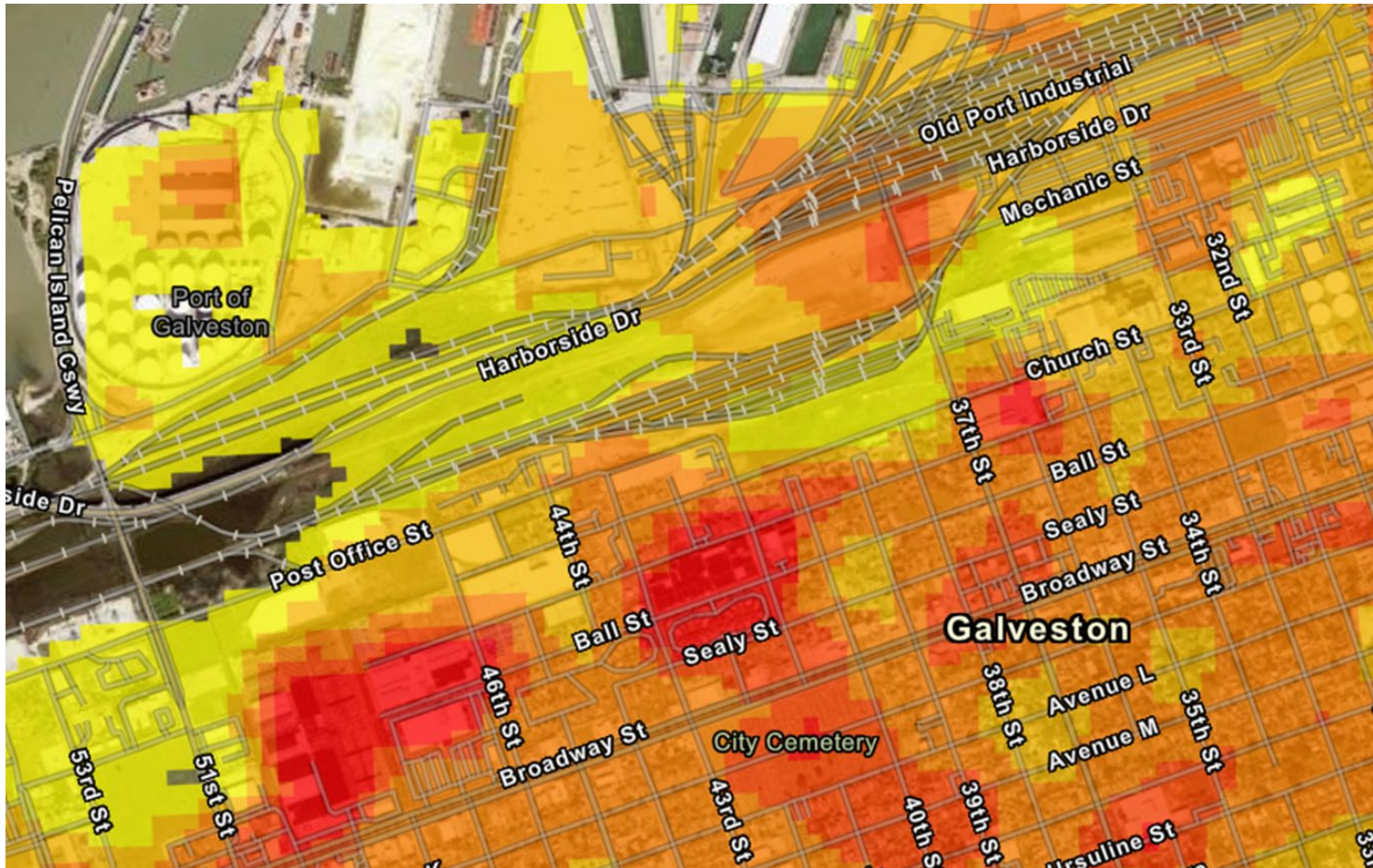
April 15 from 11:00am - 1:00pm
Central Middle School Field
3014 Sealy St, Galveston, TX 77550

ASAKURA ROBINSON | HARC | VISION GALVESTON

April showers bring May flowers. If it rains, please join us in the gymnasium!







Potential Solutions

- Diversified Tree Canopy
- Rainwater Harvesting Cisterns
- Native Rain Gardens/Landscapes
- Community Garden + NBS/murals/edible trail (native)

Jones Park Redesign



Jones Park Redesign



Jones Park Redesign

SITE PLAN

- | | |
|--|---|
| 1 BIORETENTION W/ ACCENT WETLAND PLANTING | 17 ON-STREET PARKING |
| 2 PARKING LOTS W/ POWERBLOCK PERMEABLE PAVER | 18 PARK MONUMENT SIGN |
| 3 PORTABLE RESTROOM | 19 OPEN LAWN (SOD) |
| 4 BIKE RACKS | 20 4' HEIGHT FENCE |
| 5 PEDESTRIAN PERMEABLE PAVER | 21 6' PERIMETER FENCE |
| 6 BASKETBALL COURT | NEW SHADE TREES |
| 7 PICKLEBALL COURTS | NEW ORNAMENTAL TREES |
| 8 FITNESS AREA W/ PIP SURFACE | NEW PALM TREES |
| 9 NATIVE GRASS SEED MIX | EXISTING TREES POTENTIALLY TO REMAIN |
| 10 BIORETENTION TRANSITION PLANTING | EXISTING PALM TREES POTENTIALLY TO REMAIN |
| 11 BOARDWALK-STYLE CONCRETE WALK | BIOFILTRATION SYSTEM |
| 12 PAVILION W/ PICNIC TABLES AND PAINTED SCHOOL GAMES | TRASH RECEPTACLE |
| 13 SEATWALL | PEDESTRIAN LIGHT |
| 14 PLAYGROUND W/ PIP SURFACE | EDUCATIONAL SIGNAGE |
| 15 VEGETATED SWALE W/ WETLAND PLANTING | RELOCATED GRANITE MONUMENT |
| 16 ARTIFICIAL TURF MOUND W/ ADA ACCESSIBLE SLIDES AND STEPPERS | BENCH |



Jones Park Redesign

PLANT PALETTE

PERENNIALS



Saltgrass
Distichlis spicata



Canna Lily
Canna x generalis



Southern Blue Iris
Iris virginica



Texas Spiderlily
Hymenocallis liriosme



Blue Mistflower
Conoclinium coelestinum



Gaura
Gaura lindheimeri



Tropical Sage
Salvia coccinea



PLANT PALETTE

TREES AND PALMS



Montezuma Bald Cypress
Taxodium mucronatum



Live Oak
Quercus virginiana



Mexican Fan Palm Hybrid
Washingtonia filifera



Pindo Palm Tree
Butia capitata



SMALL TREES



Wax Myrtle
Myrica caribaea



Yaupon Holly
Ilex vomitoria



Mexican Olive
Cordia alliodora



PLANT PALETTE

GROUNDCOVERS



Frogfruit
Phytolacca nodiflora



Natal Plum
Carissa grandiflora



Little Bluestem
Schizachyrium scoparium



Common Lantana
Lantana camara



Inland Sea Oats
Chasmanthium latifolium



TURFGRASS



Seashore Paspalum
Paspalum vaginatum



CHARACTERISTICS

- Salt Tolerance
- Flood Tolerance
- Biological Control of Mosquitoes

JONES PARK DESIGN UPDATE
07/24/2023



Typical models:



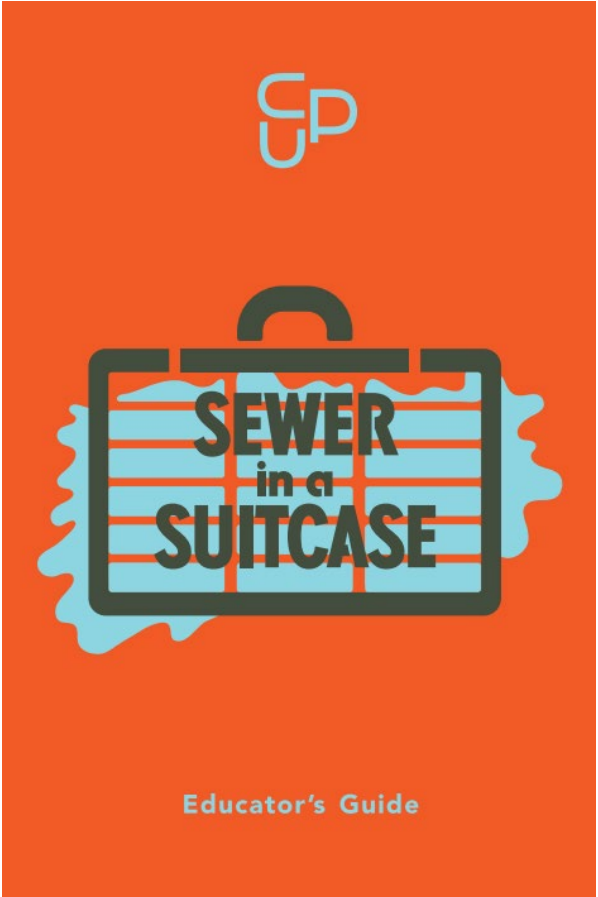
Creating a sense of place and familiarity in NYC: Sewer in a Suitcase



Creating a sense of place and familiarity in NYC: Sewer in a Suitcase



Creating a sense of place and familiarity in NYC: Sewer in a Suitcase



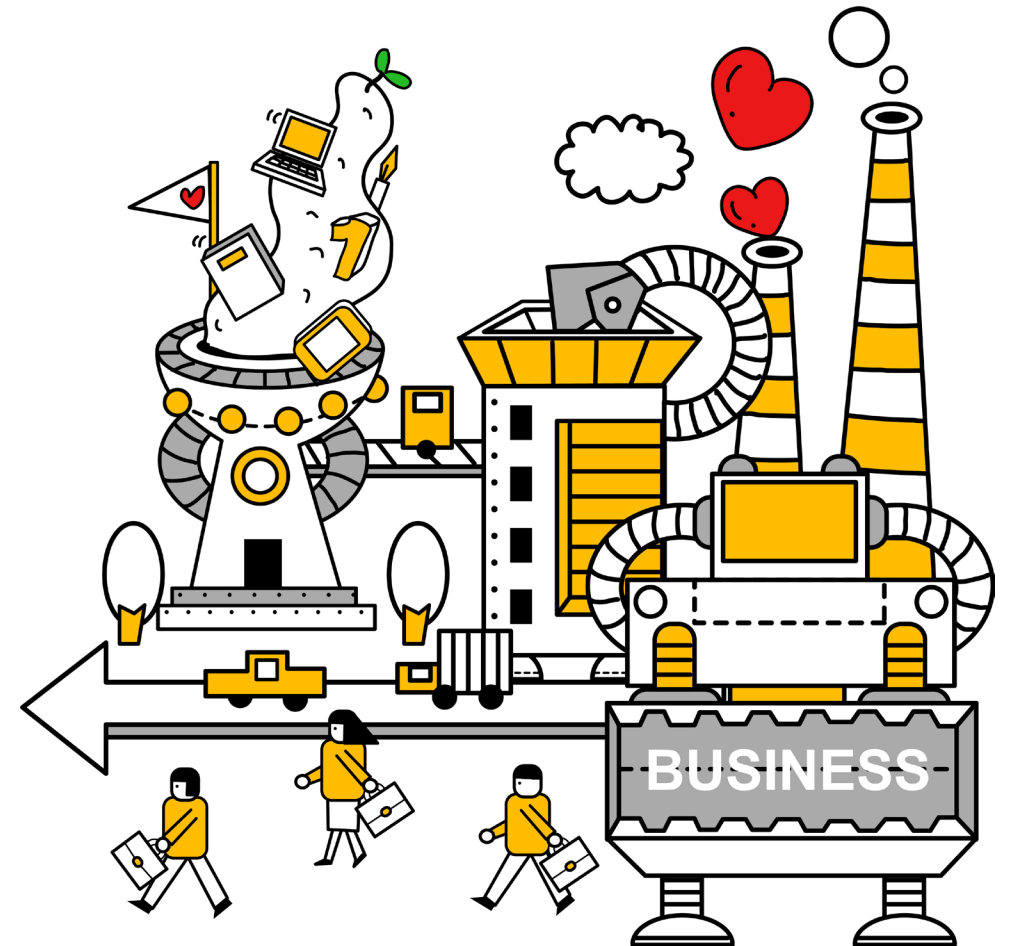
Creating a sense of place and familiarity in NYC: Sewer in a Suitcase

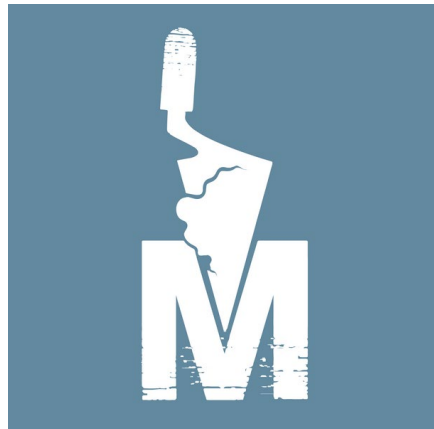
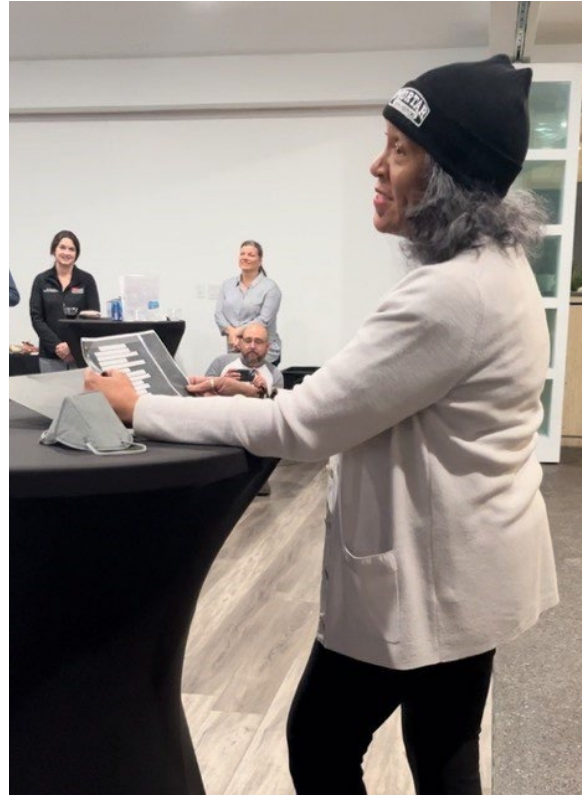


Bioswale in a Bag

- Portable model of a bioswale in a Galveston community/ neighborhood
- Create K-12 and informal outreach curriculum
- Hold workshops and distribute to schools, CBOs, other organizations

Incubate Galveston





MORTAR

GALVESTON

powered by: **VISION**
GALVESTON





HACKATHON

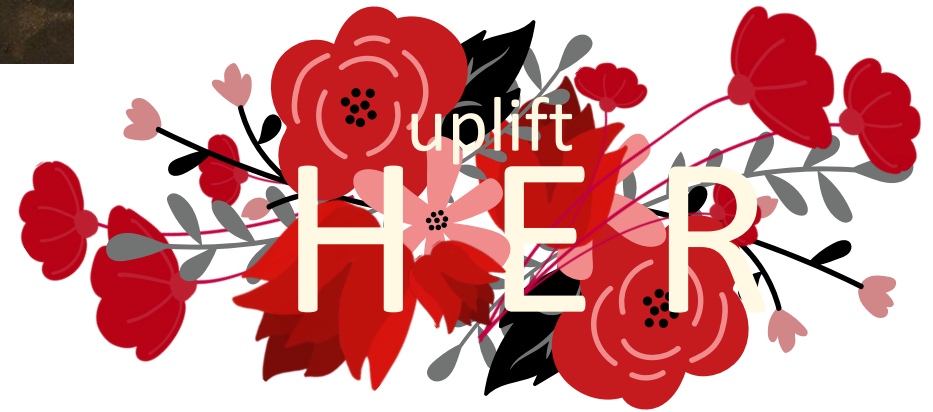


G a l v e s t o n

PHILANTHROVISION



GALVESTON
ARTpreneurship
PROGRAM





Takeaways and final thoughts

- The most impactful projects are those that involve the community
- The work we do isn't just about the environment
- "Green" is holistic and includes people's social, emotional and economic well-being

candy@visiongalveston.com

anna@visiongalveston.com