

MONITORING & RESEARCH SUBCOMMITTEE

RECENT SUCCESSES AND ONGOING
PROJECTS



Long-term Monitoring of Living Shorelines



Living Shoreline Site

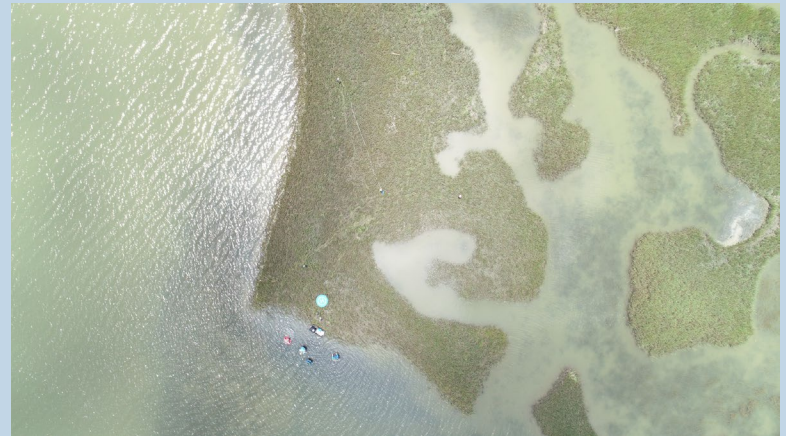


Long-term Monitoring of Living Shorelines

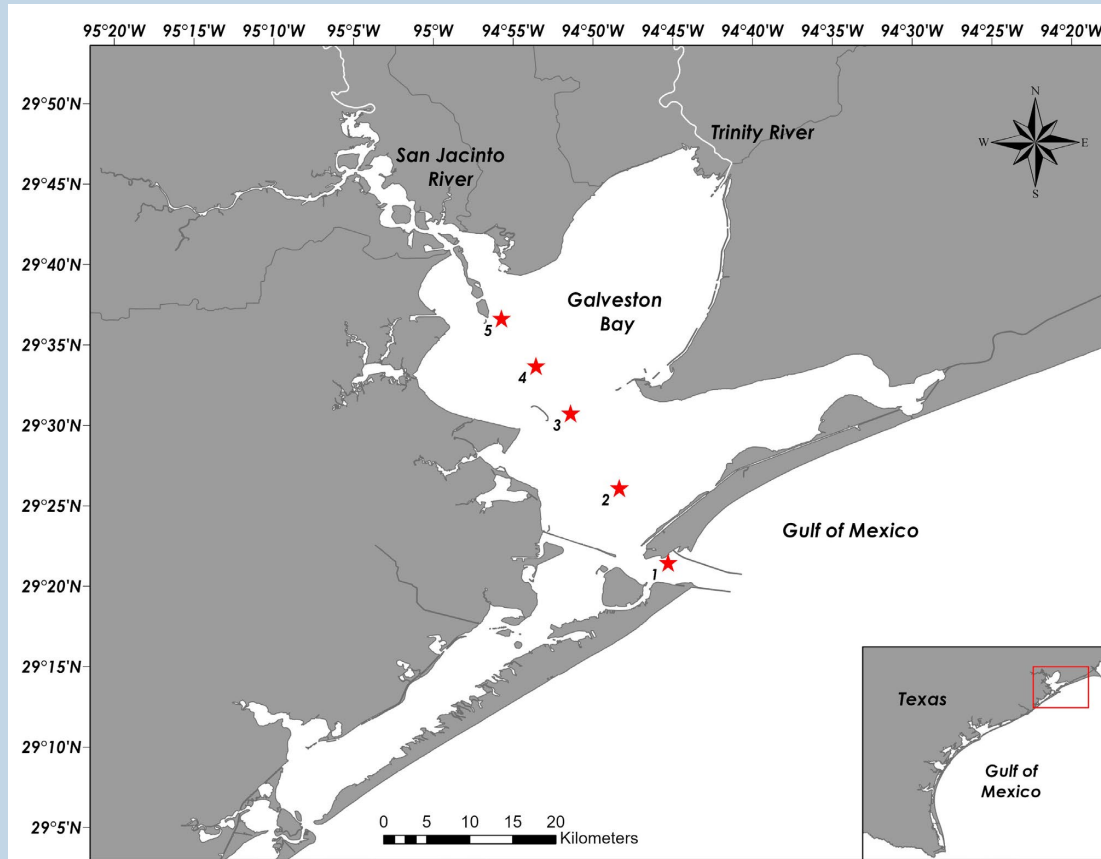
Living Shoreline Drone Imagery



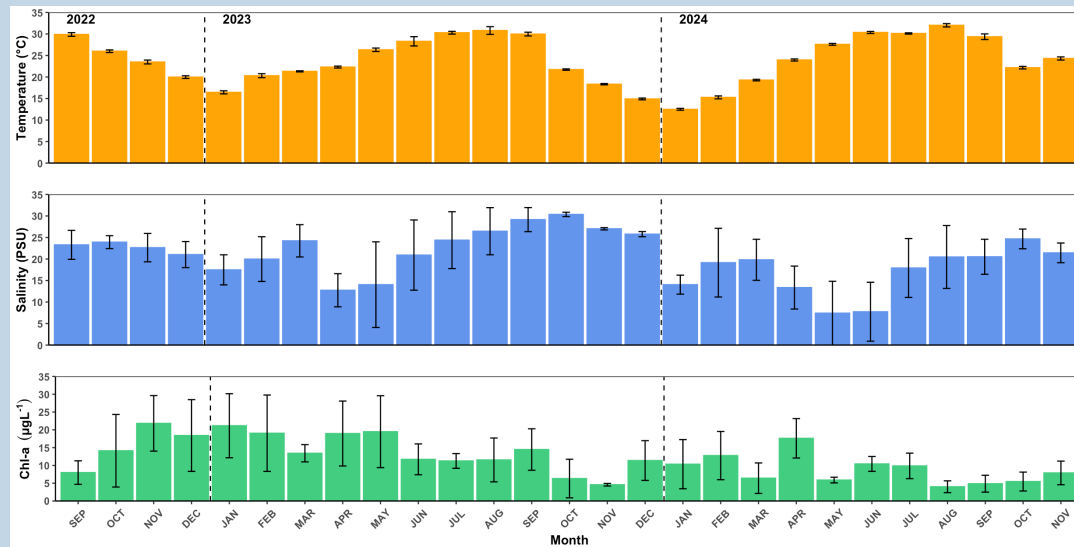
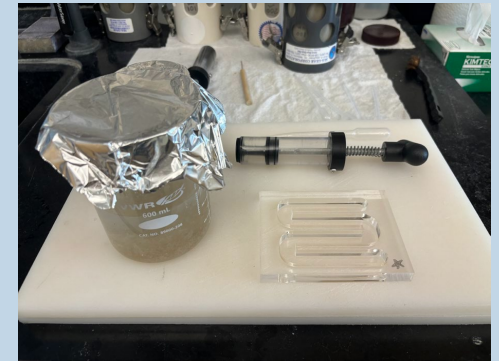
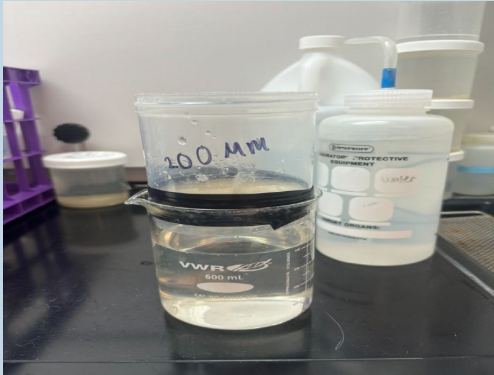
Reference Drone Imagery



Monitoring Ecosystem Indicators for Science-Based Restoration and Enhancement



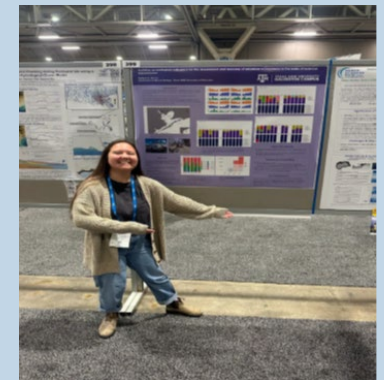
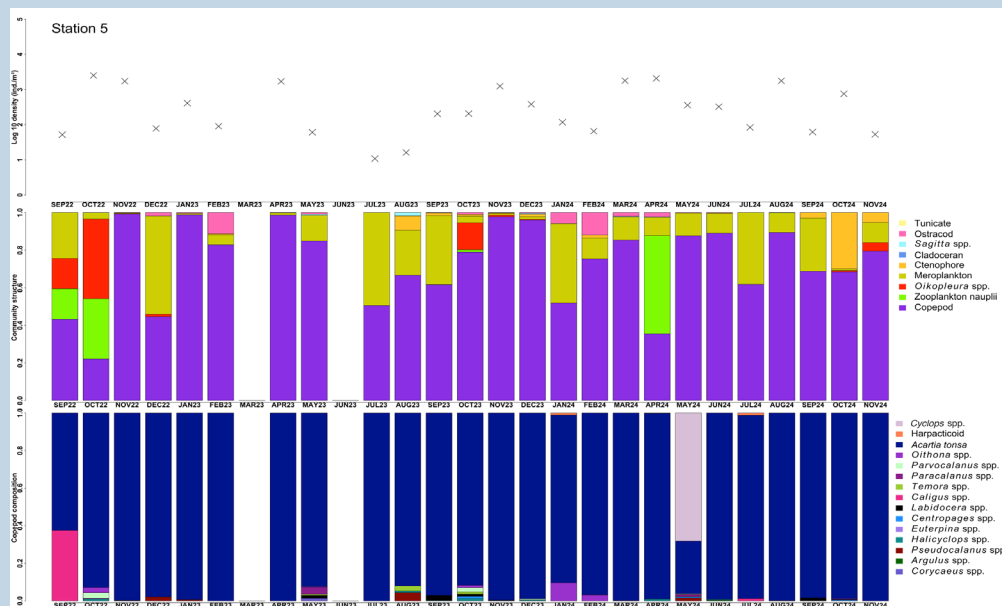
Monitoring Ecosystem Indicators for Science-Based Restoration and Enhancement



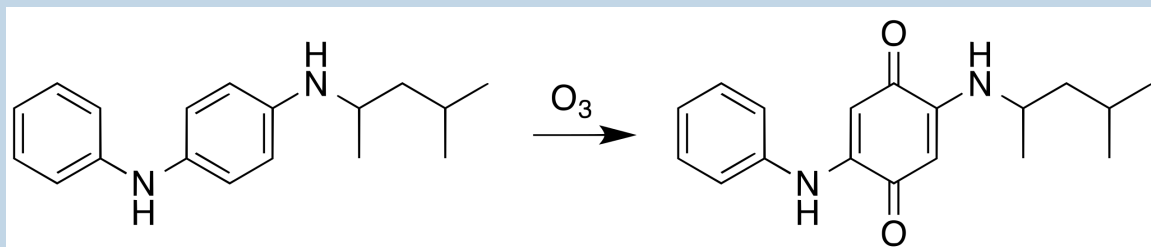
*Photos courtesy of Liu Lab TAMUG

Monitoring Ecosystem Indicators for Science-Based Restoration and Enhancement

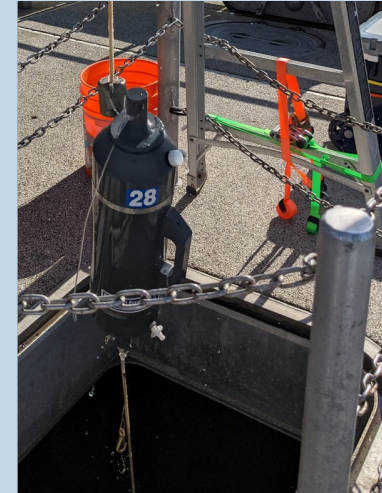
Zooplankton community composition over time



The Distribution and Fate of Tire Rubber-Derived Chemicals in Galveston Bay



The Distribution and Fate of Tire Rubber-Derived Chemicals in Galveston Bay



ONGOING M&R PROJECTS

Project	Amount	Ends
Long-term Monitoring of Living Shorelines	\$127,791	05/31/25
Galveston Bay Regional Monitoring Database	\$350,228	08/31/25
Monitoring Ecosystem Indicators for Science-Based Restoration and Enhancement	\$130,663	03/31/26
The Distribution and Fate of Tire Rubber-Derived Chemicals in Galveston Bay	\$98,312	05/31/26
Tracking Perkinsus Marinus (Dermo) Infection in Sun-Cured Oysters	\$166,898	08/31/26
Sentinel Program to Track Perkinsus Marinus in Oysters of Galveston Bay	\$297,404	12/31/26
Evaluating Galveston Bay's Resilience to Ocean and Coastal Acidification	\$278,800	05/31/27
Monitoring to Assess Long-term Restoration Success in Galveston Bay Wetlands	\$151,161	02/28/27

8 projects, \$1,601,257 from GBEP/GBC

UPCOMING M&R PROJECTS

- Developing Molecular Tools for Demographics and Distribution of Galveston Bay Estuary System Sea Turtles
 - TAMUG, \$99,826
- Regional Monitoring Database II
 - HARC/GTRI, \$281,123.29

QUESTIONS, COMMENTS



Jenelle Estrada, M&R Coordinator

Email: jenelle.estrada@tceq.texas.gov, Phone: (281) 486-1242





PUBLIC PARTICIPATION AND EDUCATION SUBCOMMITTEE RECENT SUCCESSES AND ONGOING PROJECTS

KPRC COMMUNITY OUTREACH

1. Riparian Restoration Project
2. Trash Bash
3. Oyster Shell Recycling Programs
4. The 9th Addition to Coastal Heritage Preserve
5. Drought and Water Conservation Outreach
6. SPLASh
7. Targeted Microplastics Monitoring



KPRC COMMUNITY OUTREACH



www.gbep.texas.gov/kprc



KPRC COMMUNITY OUTREACH

- 30-second TV Spotlight – Galveston Bay Foundation's Oyster Shell Recycling Program
- [GBF Oyster Recycling - GBEP on KPRC on Vimeo](#)

TRASH BASH



TRASH BASH® 2025

You Came to "Clean It Like
You Mean It!"®



2,414 volunteers
removed



38.69 tons of trash
&



119 tires
from

58 miles of the Galveston Bay watershed!

Learn more at www.trashbash.org
and join us next year!



MOBILIZING THE ENVIRONMENTAL EDUCATION COMMUNITY THROUGH PRAIRIE EDUCATION



MOBILIZING THE ENVIRONMENTAL EDUCATION COMMUNITY THROUGH PRAIRIE EDUCATION

Galveston Bay Texas 2023

Filter on

Organization Data

- Sector
- Service Area
- Staff % BIPOC
- Senior Staff % BIPOC
- Board % BIPOC

Program Data

- Offerings
- Time
- Environmental Themes
- Location
- Groups Served
- Rural Focus

Dashboard



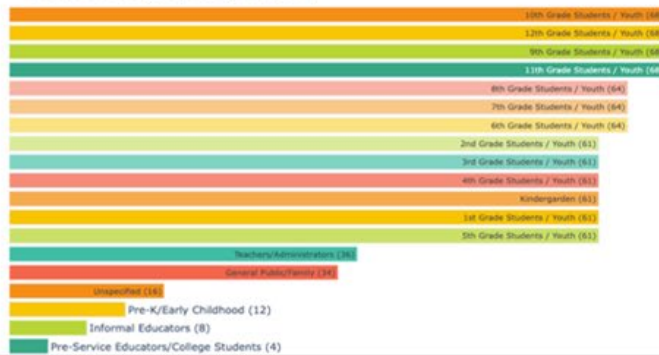
Organization Records (40)

Program Records (117)

Terms Used to Describe Work (grouped by Organization)

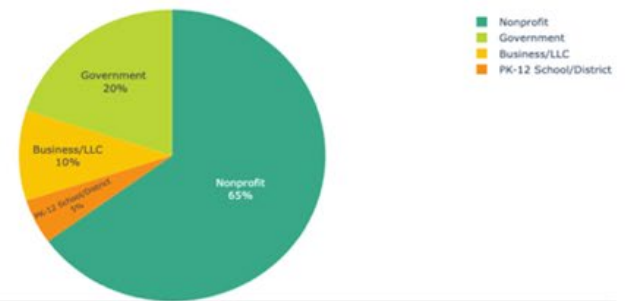


Groups Served (grouped by Program)



Terms Used to Describe Work

Sector (grouped by Organization)



Groups Served

Sector

MOBILIZING THE ENVIRONMENTAL EDUCATION COMMUNITY THROUGH PRAIRIE EDUCATION



FREE WORKSHOP!

EARN 8 CREDIT HOURS
FIELD & VIRTUAL COMPONENTS

PRAIRIE 101 TEACHER WORKSHOP

Art • Technology • History • Pollinators
Coastal Prairie Ecosystem Services
Native Plants, Peoples, Cowboys and Cotton
Ecology • Hydrology • TEKS Aligned

SAT., OCTOBER 15, 2022
9AM TO 3PM
LAWTHER-DEER PARK
PRAIRIE PRESERVE

+ VIRTUAL COMPONENT
THU., NOVEMBER 3, 2022
6:30 TO 8:30PM
ZOOM

Please bring your lunch and
reusable water bottle.

Space is Limited
Register & Questions:

Della_Barbata@TexasPrairie.org

ONGOING PPE PROJECTS

Project	Amount	Ends
Water Quality Outreach Implementation for Vulnerable Rural Populations	\$40,000.00	05/31/2025
Resiliency in Education and Green Infrastructure	\$336,000.00	08/31/2026
Wetland Connections	\$173,300.00	08/31/2026
Drought and Water Conservation Outreach Campaign	\$50,000.00	08/31/2025
Mobilizing EE Community through Prairie Education Phase II	\$81,052.31	08/31/2026
Engaging Under-resourced Communities in Conservation Phase II	\$64,140.00	05/31/2026
Bay to Schools	\$107,937.00	08/31/2025
SPLASh in Houston's Bayous and Beyond	\$353,597.00	08/31/2026
UHCL (KPRC) Community Outreach	\$146,655.00	03/31/2026
Trash Bash	\$35,000.00	08/31/2026
Mobilizing EE Community though Prairie Education Phase I	\$92,515.60	05/31/2025

11 projects, \$1,480,196.91 from GBEP/GBC



UPCOMING PPE PROJECTS

- Texas Envirothon – University of Houston Clear Lake
Environmental Institute of Houston
 - \$90,972.00
- Nature Trails Master Plan – Houston Parks and Recreation
Department
 - \$90,000.00
- Trash Bash – Houston-Galveston Area Council
 - \$10,000.00

QUESTIONS, COMMENTS



Zoe Gapayao, PPE Coordinator

Email: zoe.Gapayao@tceq.Texas.gov, Phone: (281) 486-1245

