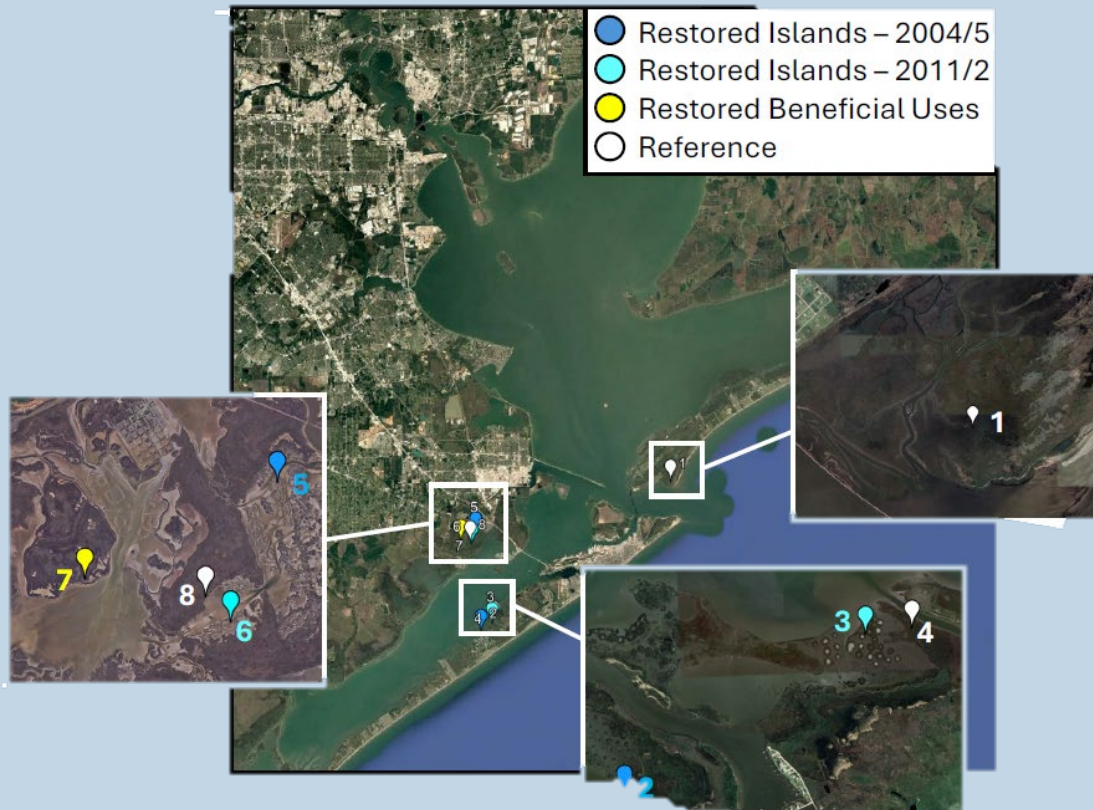


# MONITORING & RESEARCH SUBCOMMITTEE

RECENT SUCCESSES AND ONGOING  
PROJECTS



# Monitoring to Assess Long-term Restoration Success



- Data gaps exist in evaluating ecosystem services in older wetland restoration sites with varying soil
- Sites include restored marsh, reference marsh, and beneficial use marsh
- Data collected includes: plant cover, microalgal and infaunal biomass, and biofilms



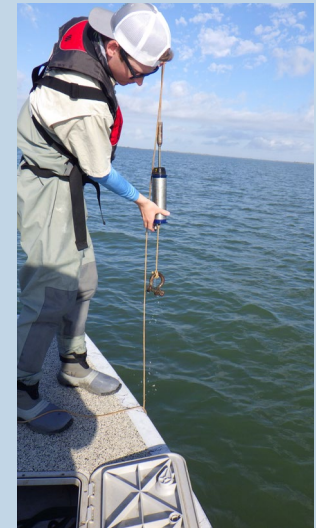
# Monitoring to Assess Long-term Restoration Success



- Field surveys and sample collection was conducted at 12 sites in October – November 2025
- Lab analysis underway
- Upcoming presentation on this project at GulfCon 2026

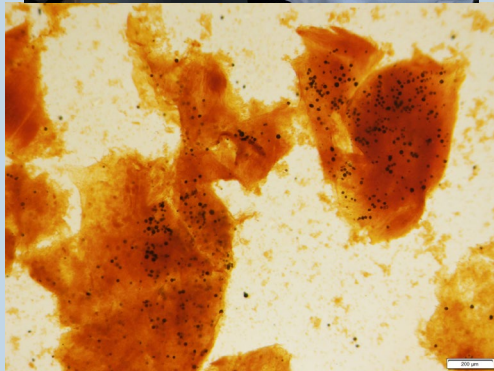


# Sentinel Program to Track *Perkinsus marinus* in Oysters of Galveston Bay





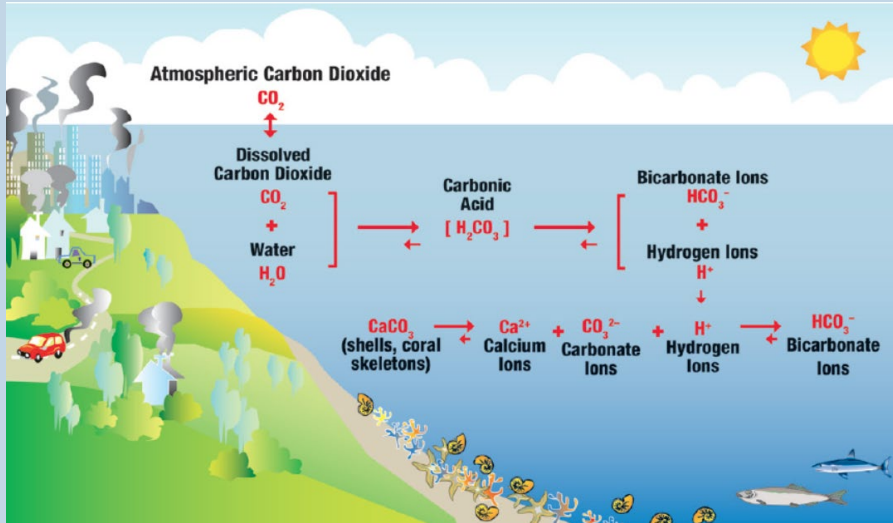
# Sentinel Program to Track *Perkinsus marinus* in Oysters of Galveston Bay



The project goals are to:

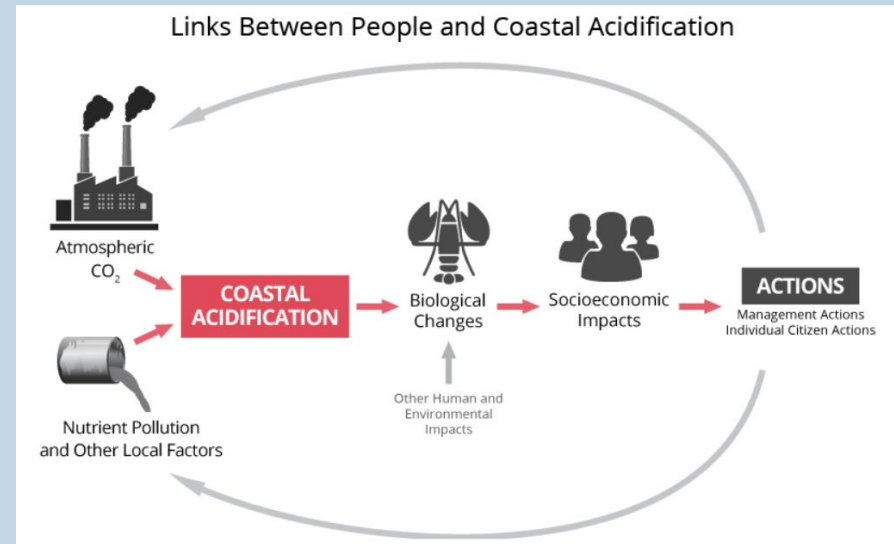
- establish a monitoring network for evaluating Dermo in Galveston Bay oysters
- compare differences in Dermo prevalence and severity using two methods
- submit pertinent data to the Oyster Sentinel online network
- characterize potential relationships of Dermo with environmental variables

# Evaluating Galveston Bay's Resilience to Ocean and Coastal Acidification



- Ocean acidification is driven by elevated atmospheric carbon dioxide  $\text{CO}_2$
- Coastal acidification is driven by inflows and eutrophication and ocean acidification.

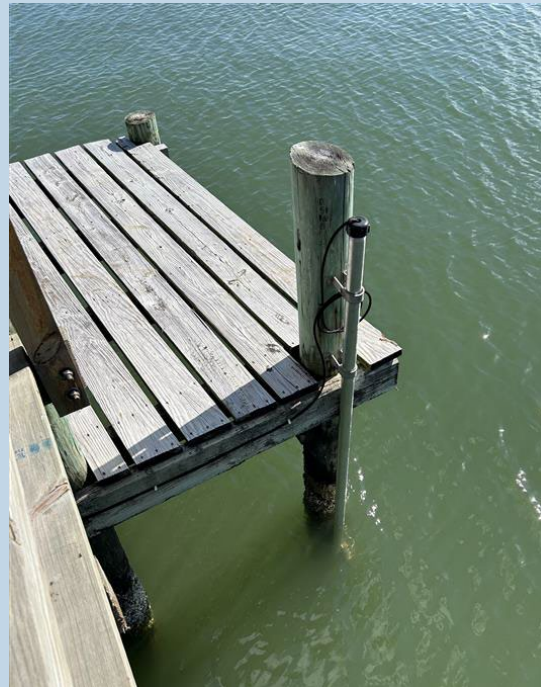
- Parameters monitored: pH, conductivity, temperature, and  $\text{pCO}_2$
- Parameters collected: Dissolved Inorganic Carbon, pH, and Total Alkalinity



<https://necan.org/ocean-and-coastal-acidification/>

# Evaluating Galveston Bay's Resilience to Ocean and Coastal Acidification

- The monitoring equipment was installed 12/9 and 12/10 and is currently collecting data



# NEW M&R PROJECTS

- Regional Monitoring Database
- Developing Molecular Tools for Demographics and Distribution of Galveston Bay Estuary System Sea Turtles



# M&R DISCUSSION ON CROSS-SUBCOMMITTEE COLLABORATION

- Opportunities
  - Work across committees for specific topics (ex. contaminants with WSQ, restoration with NRU)
  - Know the general research needs of other subcommittees ahead of the priorities meeting
- Suggestions
  - Joint subcommittee meeting open to all with randomly assigned break out rooms
  - Designate an M&R representative to attend other meetings and report back

# QUESTIONS, COMMENTS



Jenelle Estrada, M&R Coordinator

Email: [jenelle.estrada@tceq.texas.gov](mailto:jenelle.estrada@tceq.texas.gov), Phone: (281) 486-1242

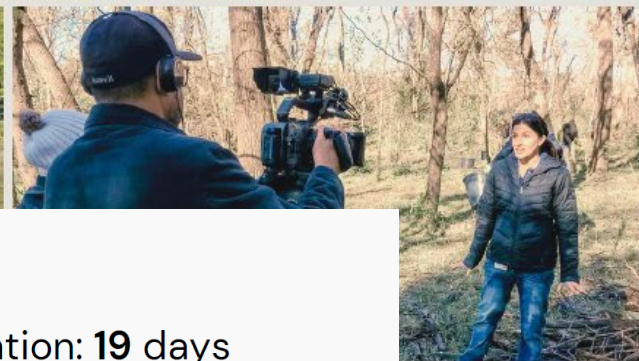




# PUBLIC PARTICIPATION AND EDUCATION SUBCOMMITTEE



# KPRC COMMUNITY OUTREACH



## BY THE NUMBERS

Average Campaign Duration: **19** days

Average Streaming Clicks: **53**

Average Banner Clicks: **680**

Average TV Household Impressions: **745,942**

Total TV Household Impressions: **5,221,600**



[www.gbep.texas.gov/kprc](http://www.gbep.texas.gov/kprc)





# WETLAND CONNECTIONS





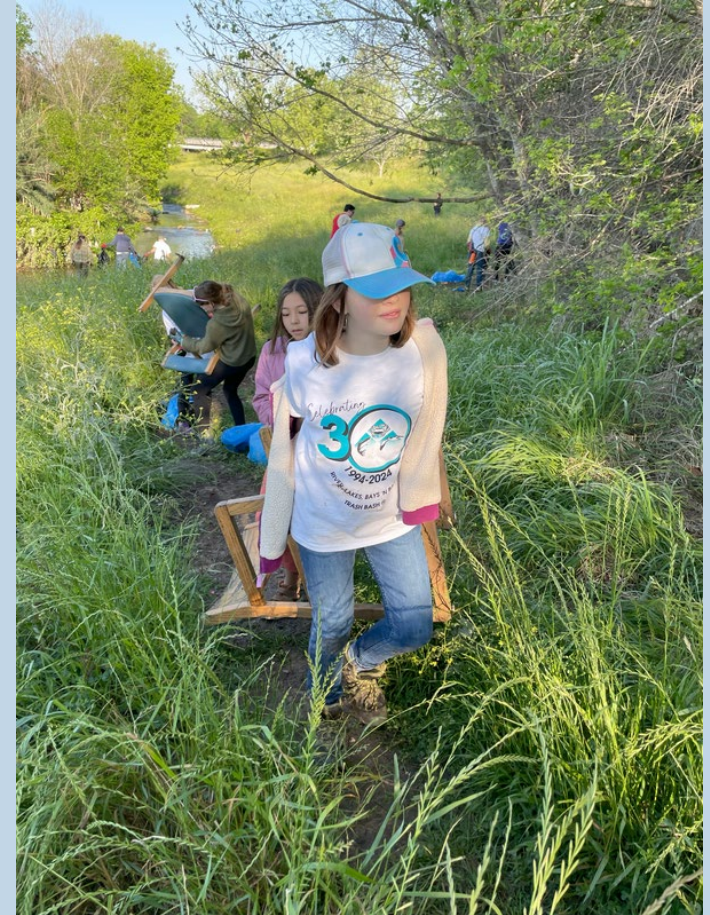
# ENGAGING UNDER-RESOURCED COMMUNITIES IN CONSERVATION PHASE II





# TRASH BASH

- March 28, 2026



# NEW PPE PROJECTS

- City of Houston Nature Trails Master Plan
- Texas Envirothon

# PPE DISCUSSION ON CROSS-SUBCOMMITTEE COLLABORATION

- Opportunities
  - Curriculum that reflects real-world conservation work
  - Embed education into restoration and volunteer events
  - Share education and outreach best practices with other subcommittees
- Suggestion
  - Elevator pitch that clarifies PPE's capabilities



# QUESTIONS, COMMENTS



Zoe Gapayao, PPE Coordinator

Email: [zoe.Gapayao@tceq.Texas.gov](mailto:zoe.Gapayao@tceq.Texas.gov), Phone: (281) 486-1245

