

Dickinson Bay Island 2 | *Monitoring: 2024 Bird Surveys*



In year two (2024), brush nesting species begin to utilize the island.



Dickinson Bay Island 2 | *Monitoring: 2024 Bird Surveys*

May 2024 estimated nesting pairs

3,063 Laughing Gull

377 Royal Tern

714 Sandwich Tern

21 Snowy Egret

3 Little Blue Heron

37 Tricolored Heron

116 White Ibis

1 Brown Pelican



Terns nesting on the edge of the island, May 2024



Dickinson Bay Island 2 |

Monitoring: 2024 Bird Surveys

Can you identify the brush nesting species?



Dickinson Bay Island 2 | *Monitoring: 2025 Bird Surveys*



In year three (2025) as the shrubs and trees established on DBI-2, observed populations of ground nesters diminished while populations of brush nesters increased.



Dickinson Bay Island 2 | *Monitoring: 2025 Bird Surveys*

May 2025 estimated nesting pairs

1,920 Laughing Gull

124 Royal Tern

50 Sandwich Tern

12 Snowy Egret

7 Little Blue Heron

61 Tricolored Heron

101 White Ibis

2 Brown Pelican

48 Neotropic Cormorant

4 Great Blue Heron

26 Great Egret

295 Cattle Egret



Terns nesting on the edge of the island, May 2025



Dickinson Bay Island 2 | *Comparing DBI-1 & DBI-2 Nesting Pair Observations*

Species (DBI-1)	2021	2022	2023	2024	2025
Brown Pelican	242	323	97	63	137
Neotropic Cormorant	87	30	26	36	2
Great Blue Heron	12	11	11	6	11
Great Egret	36	35	40	61	84
Snowy Egret	48	55	32	6	2
Little Blue Heron	0	5	2	3	0
Tricolor Heron	111	50	75	13	1
Cattle Egret	351	430	265	186	0
White Ibis	191	1	39	1	2
Roseate Spoonbill	7	6	6	0	0
Laughing Gull	2160	2160	2070	254	100
Caspian Tern	4	2	0	0	0
Royal Tern	1	21	0	0	0
Sandwich Tern	0	0	0	0	0
Forster's Tern	0	0	2	0	0
Black Skimmer	0	0	0	0	0
Total	3250	3129	2665	629	339

Species (DBI-2)	2023	2024	2025
Brown Pelican	4	1	2
Neotropic Cormorant	0	0	48
Great Blue Heron	0	0	4
Great Egret	0	0	26
Snowy Egret	0	21	12
Little Blue Heron	0	3	7
Tricolor Heron	0	37	61
Cattle Egret	0	0	295
White Ibis	0	116	101
Roseate Spoonbill	0	0	0
Laughing Gull	4320	3063	1920
Caspian Tern	29	0	0
Royal Tern	315	377	124
Sandwich Tern	20	714	50
Forster's Tern	0	0	0
Black Skimmer	4	0	0
Total	4688	4332	2650





EXPECT THE UNEXPECTED - INVASIVE SPECIES!



OYSTER REEF DESIGN



BIRD DETERRENTS

Lessons Learned

Dickinson Bay Island 2



GALVESTON BAY FOUNDATION

PROTECT TODAY. PRESERVE TOMORROW.

Beneficial Use of Dredge Material for Restoration of Pierce Marsh

Sally Clark; Director of Habitat Restoration



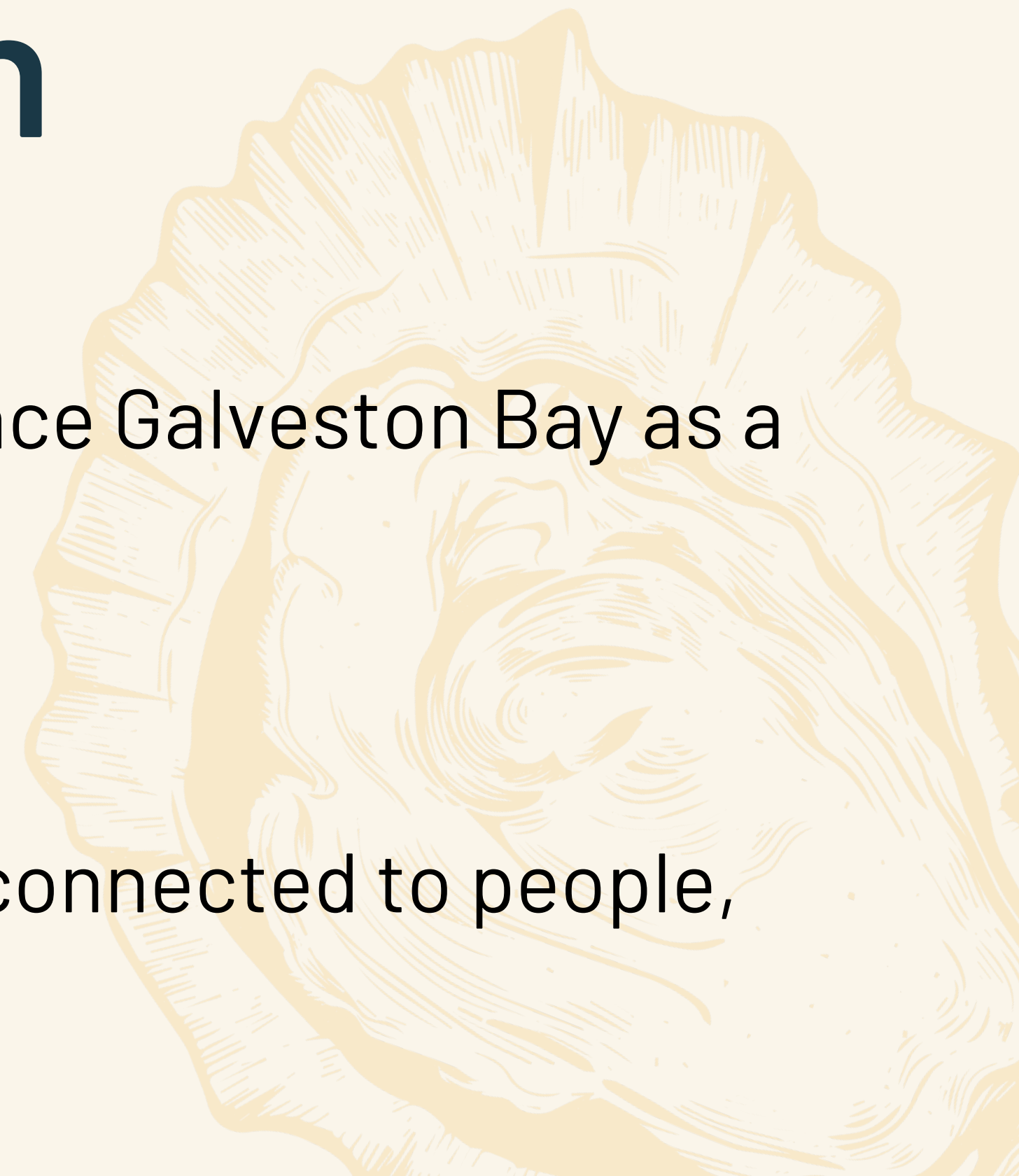
Our Mission & Vision

Mission

The mission of Galveston Bay Foundation is to preserve and enhance Galveston Bay as a healthy and productive place for generations to come.

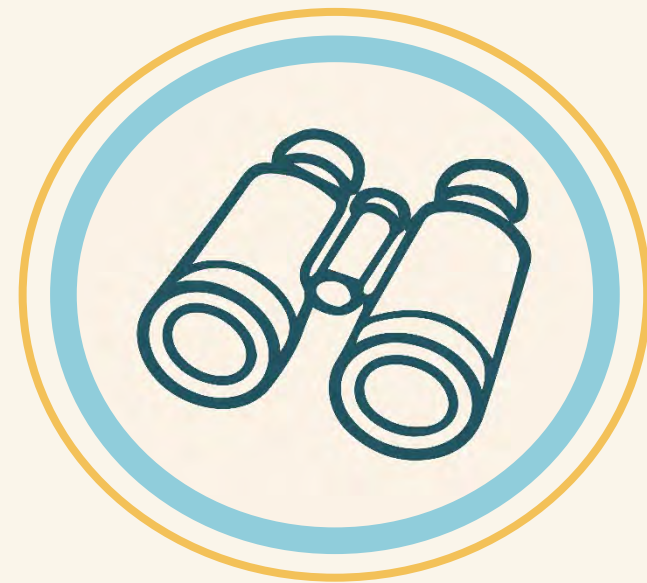
Vision

We envision a future Galveston Bay that is brimming with vitality, connected to people, and contributing to the community in every possible way.





Program Areas



Education



Habitat Restoration



Land Conservation



Water Protection



Research



Advocacy



Habitat Restoration at GBF

ON LAND

- Coastal Forest Restoration
- Coastal Prairie Restoration
- Freshwater Wetland Restoration

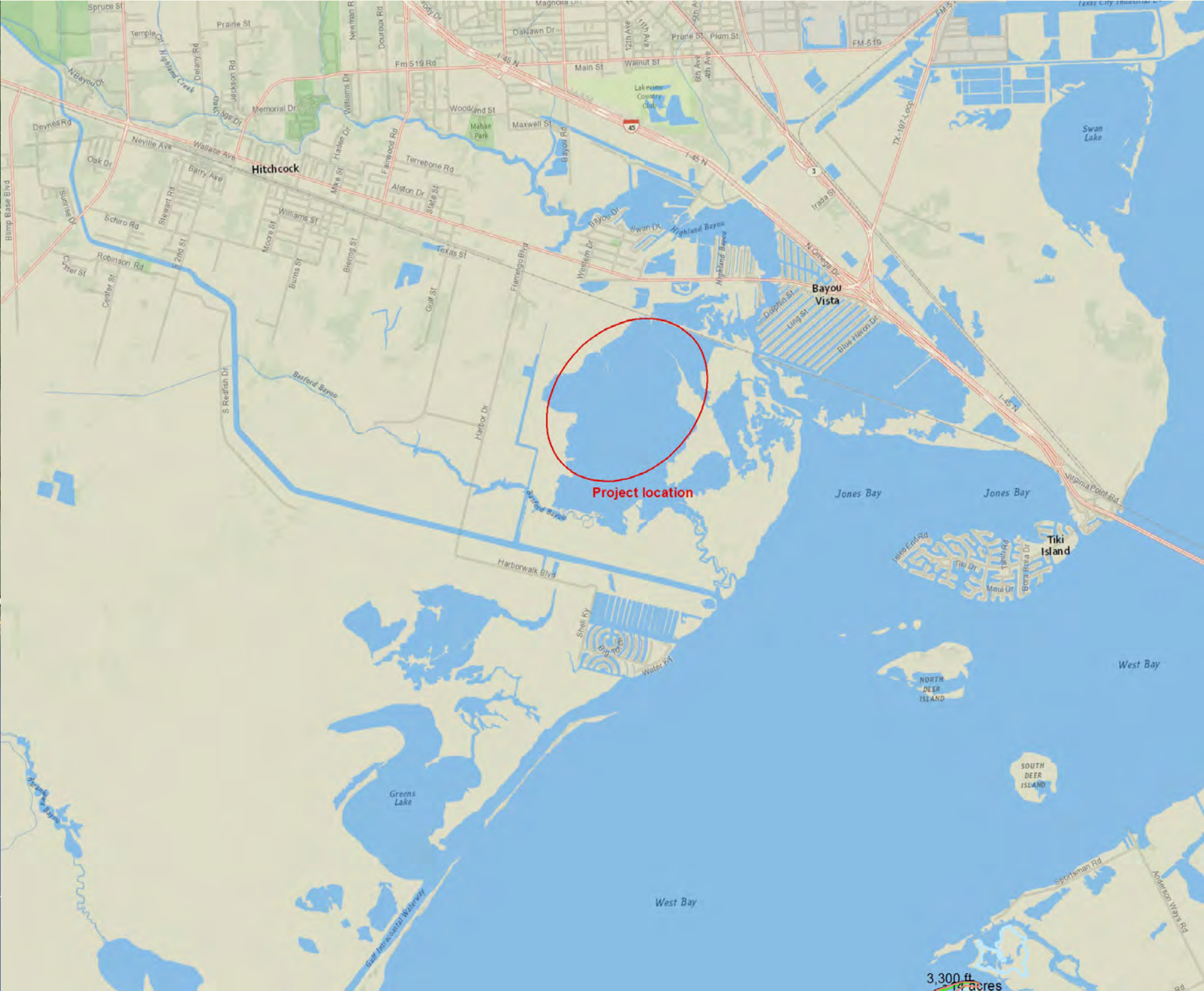
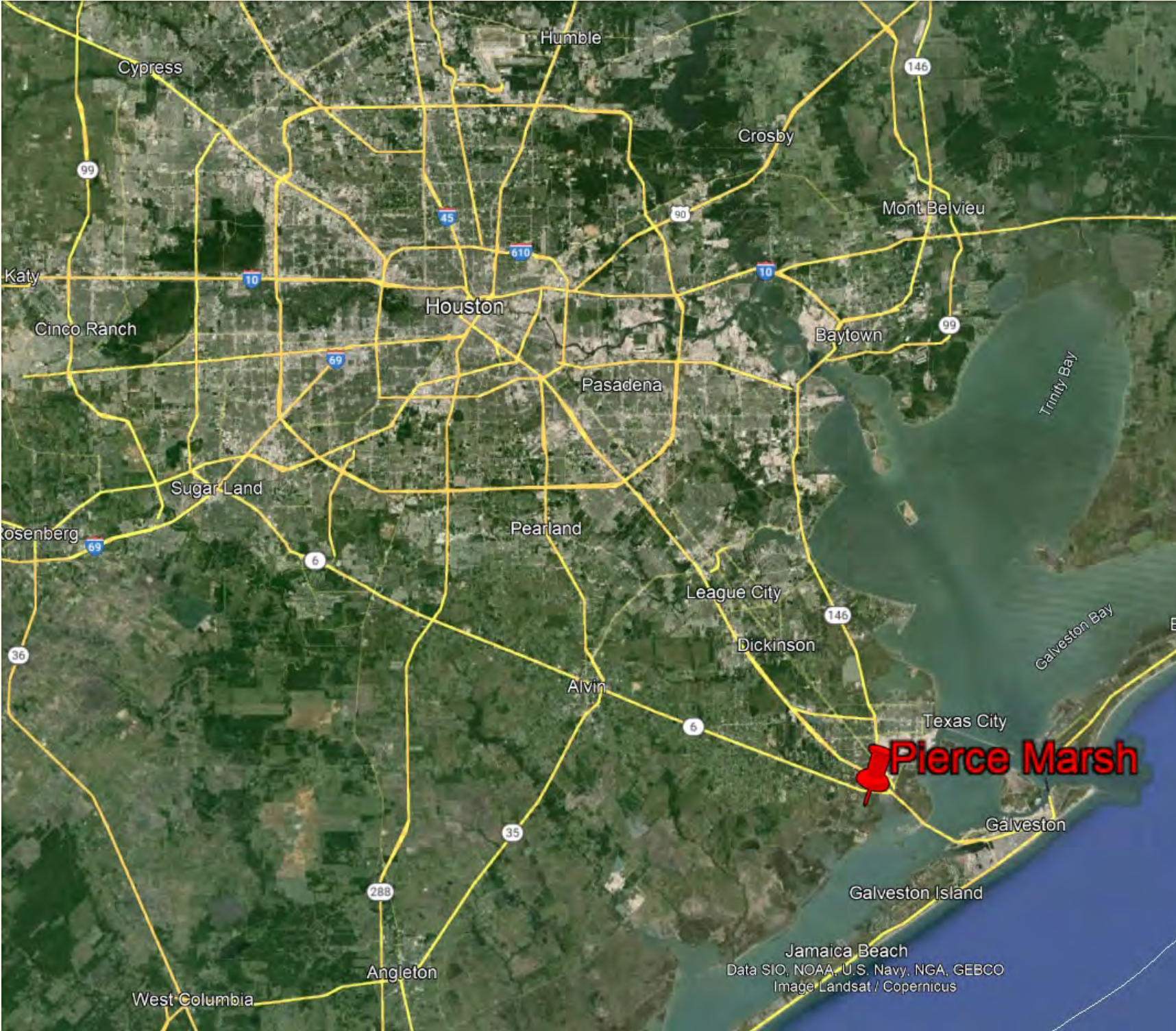
IN THE WATER

- Bird Island Habitat Restoration 9+ acres
- Marsh Restoration 680 + acres
- Shoreline Protection 22 + miles
- Oyster Reef Restoration 4 + acres
- Seagrass Restoration 150 + acres



Pierce Marsh – 2,346 acres

Jointly owned by Galveston Bay Foundation and The Nature Conservancy.
State of Texas owns submerged land.





1967



2009



2022



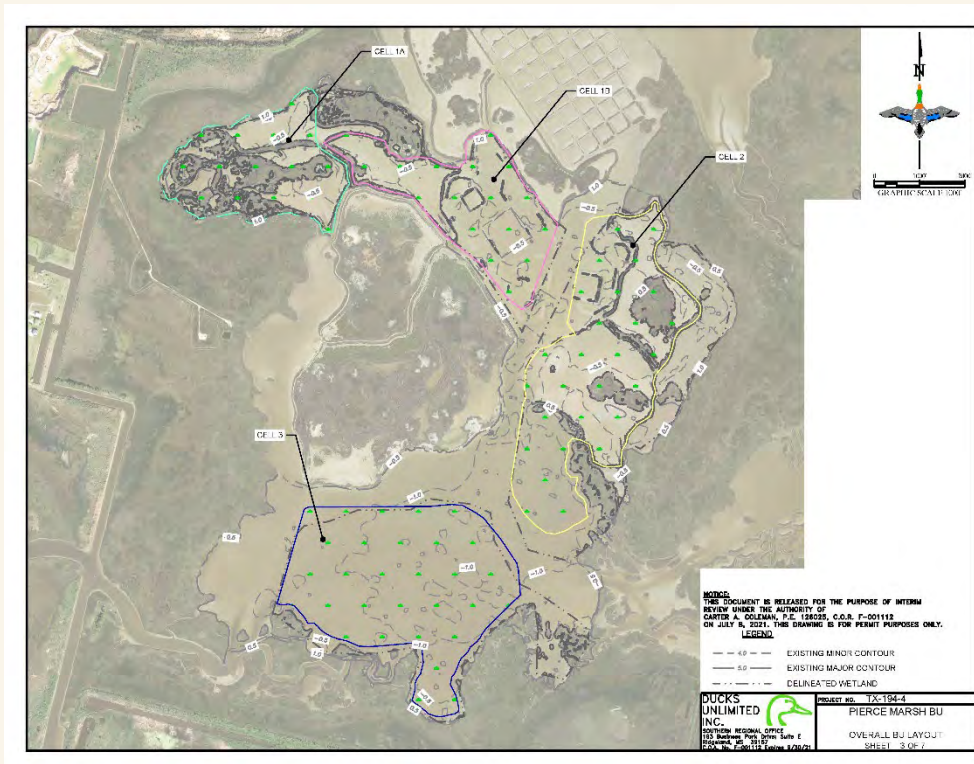
2005



2015



Future



Pierce Marsh – 1967 – 1989



Causes for Pierce Marsh degradation:

- Oil and Gas subsidence
- Hurricanes and erosion
- Sea Level Rise





1967



2009



2022



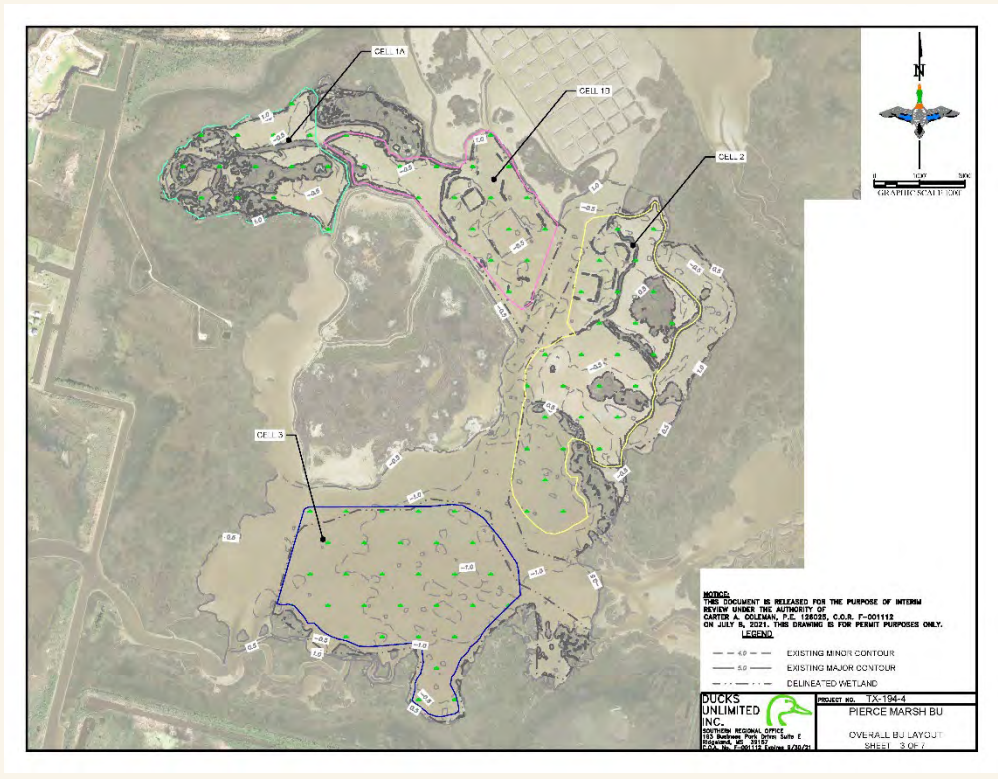
2005



2015



Future



Pierce Marsh - 1989 - 2005



Pierce Marsh - 2005



Levees were constructed in 2005

Utilized dredge material from the development of Harborwalk community

Designed to beneficially utilize dredge material from USACE Gulf Intracoastal Waterway (GIWW) maintenance dredging activities

Purpose is to restore an estuarine marsh complex

Includes intertidal fringe marsh, salt marsh, sand flat and protected shallow water





1967



2009



2022



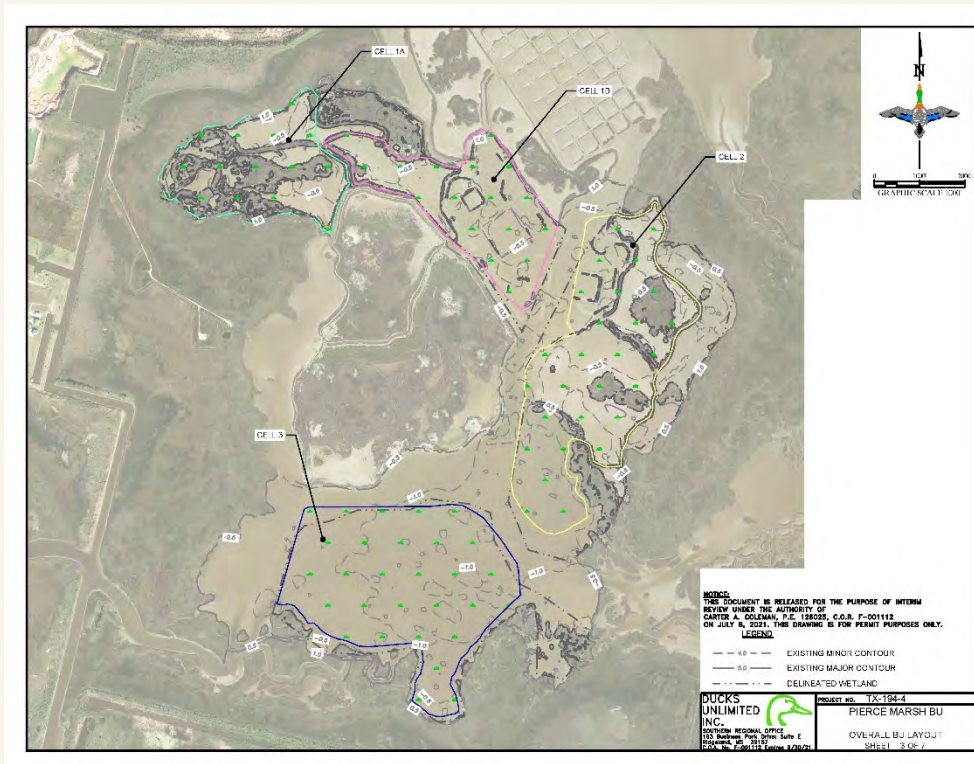
2005



2015

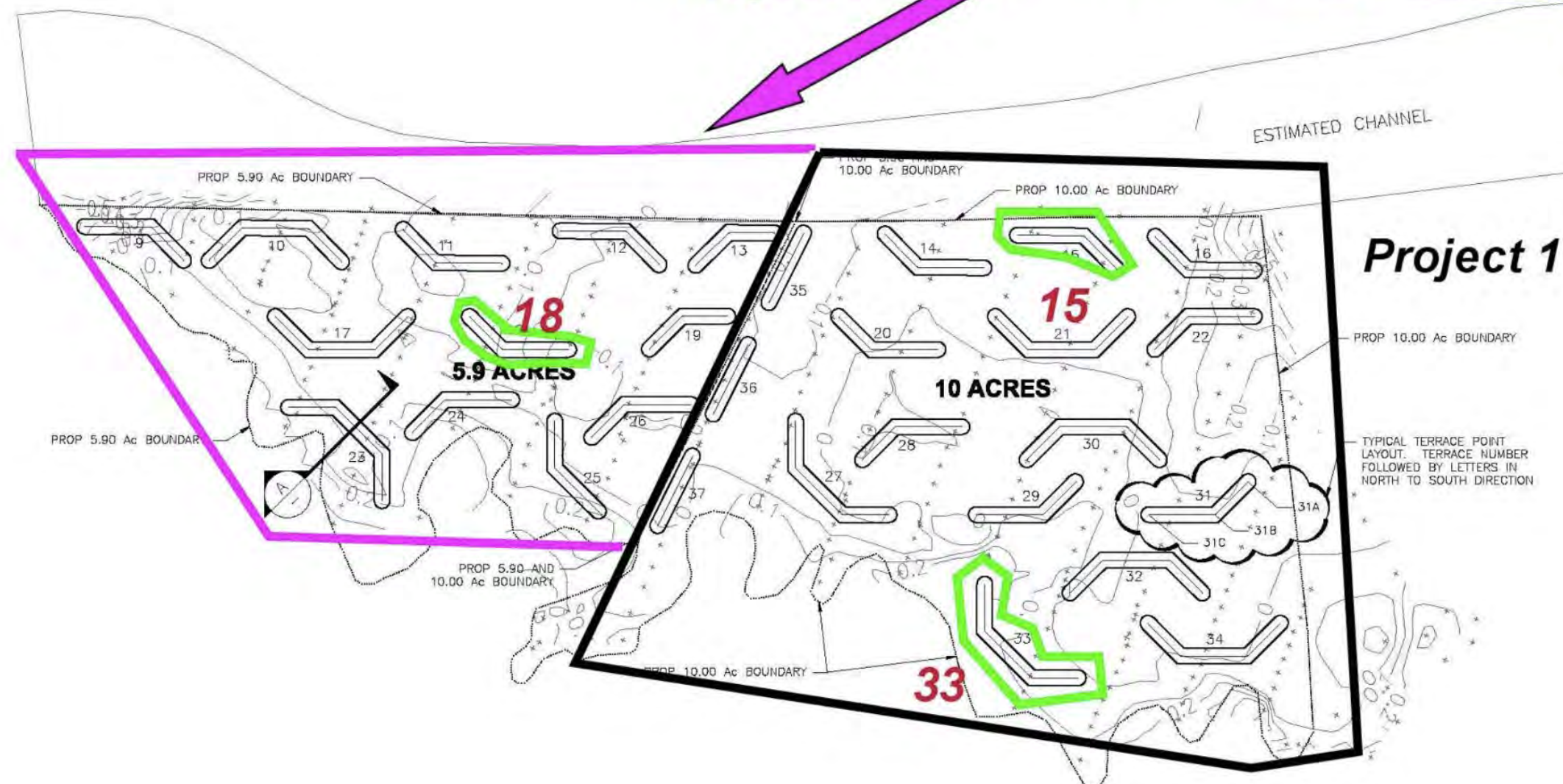
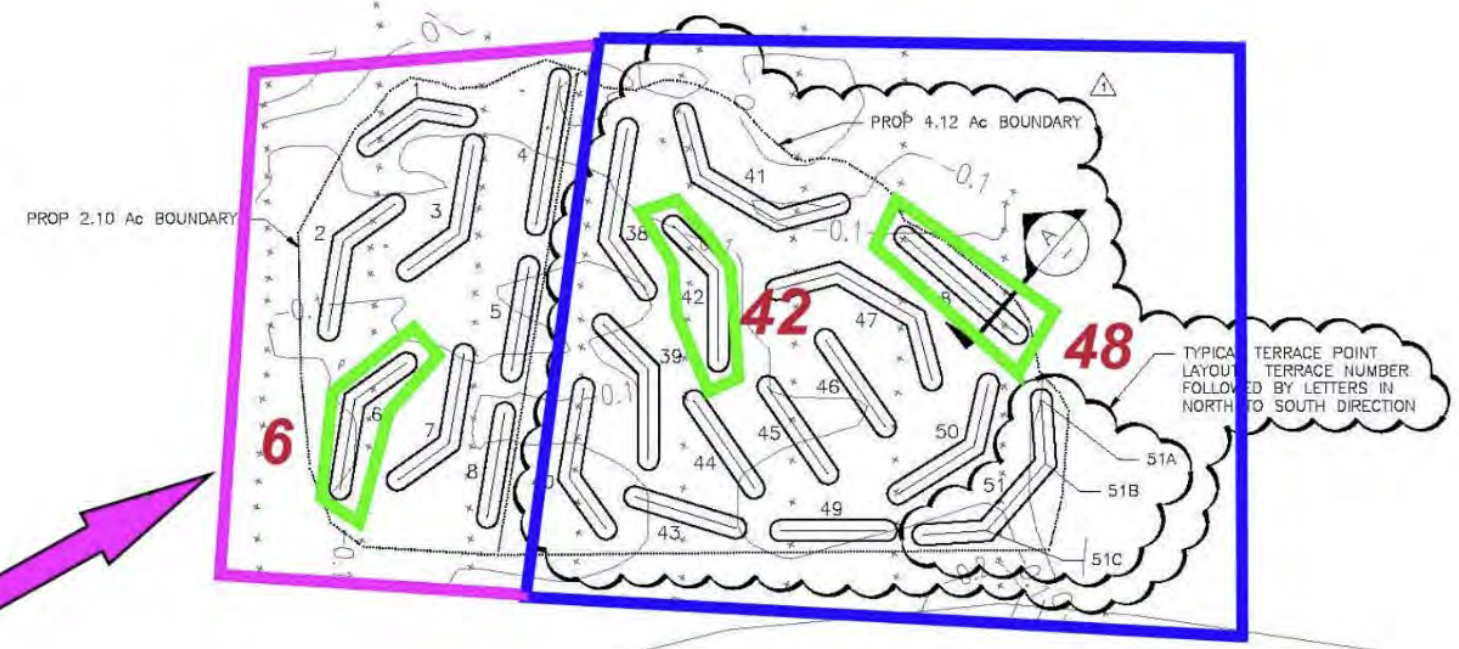
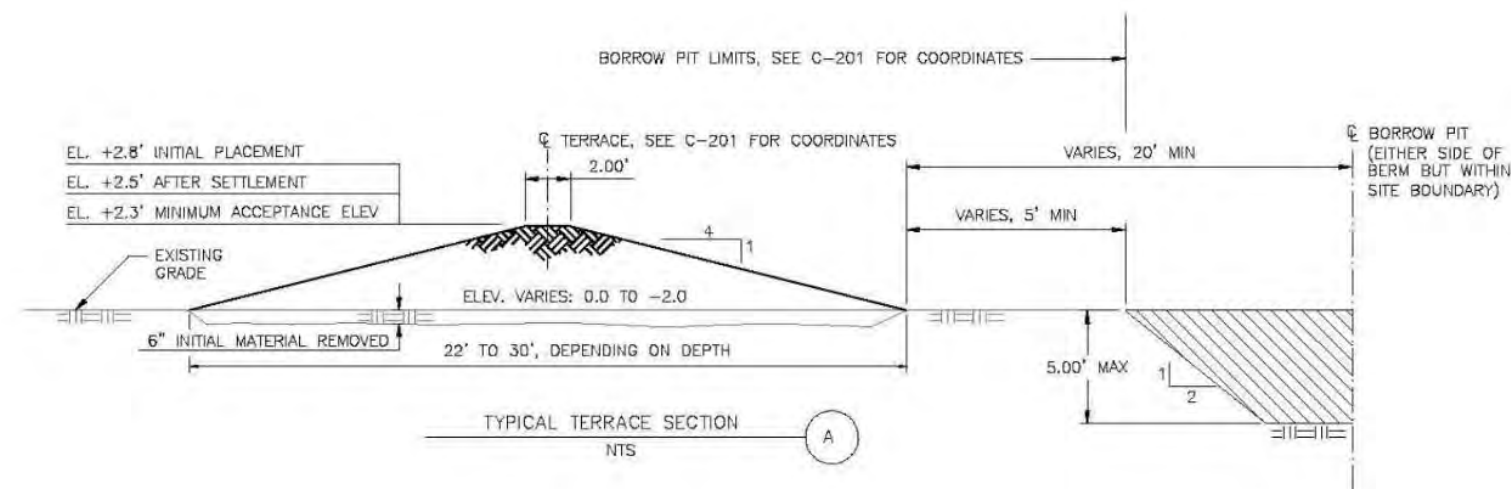


Future



Pierce Marsh - 2009





- LEGEND:
- 0.5 — EXISTING CONTOUR LINE
 - APPROXIMATE BOUNDARY LOCATION
 - 40 — PROPOSED TERRACE C, ID#, AND APPROXIMATE FOOTPRINT

- NOTES:
1. ELEVATIONS ARE IN US SURVEY FEET REF NAVD 1988 DATUM FROM A CRA — INSTALLED CONTROL POINT SET IN 1999 FOR AN EARLIER SURVEY AND DETERMINED FROM A FIRST ORDER NGS BENCHMARK V1219 USING RTK GPS TECHNIQUES.
 2. HORIZONTAL COORDINATES ARE IN TEXAS STATE PLANE GRID, SOUTH CENTRAL ZONE, NAD 1988 DATUM IN US SURVEY FEET.
 3. DATA WAS TAKEN USING TRIMBLE NAVIGATION MODEL 5700 GPS RECEIVERS IN RTK MODE. STANDARD FIELD PROCEDURES WERE PERFORMED AND THE SURVEY AND RESULTS ARE WITHIN MANUFACTURERS SPECIFICATIONS.
 4. THE INFORMATION DEPICTED ON THIS CHART REPRESENTS THE RESULTS OF SURVEYS EXECUTED DURING THE PERIOD OF 06/22/09 THROUGH 06/25/09. THIS DATA CAN ONLY BE CONSIDERED AS INDICATING THE GENERAL CONDITIONS EXISTING AT THAT TIME.

PLAN VIEW — PIERCE MARSH
SCALE: 1"=100'

D:\proj\CAD\C-200 (Site Layout)_4 Acres\C-200 (Site Layout)_4 Acres.dwg Layout: Layout1 User: jsc_vjm Plotfile: Feb 17, 2010 - 3:46pm

